

**EBP2 rabbit pAb****Cat#: orb773511 (Manual)**

For research use only. Not intended for diagnostic use.

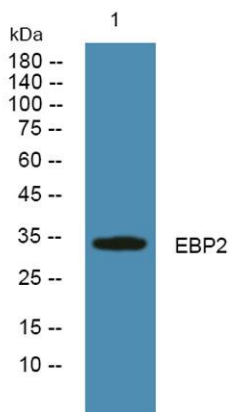
<b>Product Name</b>	EBP2 rabbit pAb
<b>Host species</b>	Rabbit
<b>Applications</b>	WB;ELISA
<b>Species Cross-Reactivity</b>	Human;Mouse
<b>Recommended dilutions</b>	WB 1:500-2000 ELISA 1:5000-20000
<b>Immunogen</b>	Synthesized peptide derived from human protein . at AA range: 140-220
<b>Specificity</b>	EBP2 Polyclonal Antibody detects endogenous levels of protein.
<b>Formulation</b>	Liquid in PBS containing 50% glycerol, and 0.02% sodium azide..
<b>Storage</b>	Store at -20°C. Avoid repeated freeze-thaw cycles.
<b>Protein Name</b>	Probable rRNA-processing protein EBP2 (EBNA1-binding protein 2) (Nucleolar protein p40)
<b>Gene Name</b>	EBNA1BP2 EBP2
<b>Cellular localization</b>	Nucleus, nucleolus . Associated with the nucleolus in an RNA-dependent manner.
<b>Purification</b>	The antibody was affinity-purified from rabbit antiserum by affinity-chromatography using epitope-specific immunogen.
<b>Clonality</b>	Polyclonal

<b>Concentration</b>	1 mg/ml
<b>Observed band</b>	33kD
<b>Human Gene ID</b>	10969
<b>Human Swiss-Prot Number</b>	Q99848

### Alternative Names

### Background

function:Required for the processing of the 27S pre-rRNA.,similarity:Belongs to the EBP2 family.,subunit:Specifically interacts with EBV EBNA1. The EBNA1-EBP2 interaction is important for the stable segregation of EBV episomes during cell division.,tissue specificity:Ubiquitous.,



**Western blot analysis of lysates from PC12 cells, primary antibody was diluted at 1:1000, 4° over night**