

**ARL11 rabbit pAb****Cat#: orb773497 (Manual)**

For research use only. Not intended for diagnostic use.

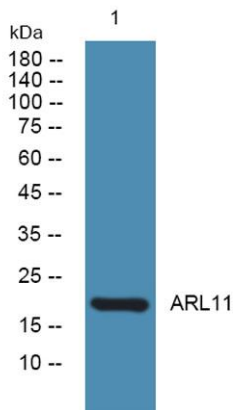
<b>Product Name</b>	ARL11 rabbit pAb
<b>Host species</b>	Rabbit
<b>Applications</b>	WB;ELISA
<b>Species Cross-Reactivity</b>	Human;Rat;Mouse;
<b>Recommended dilutions</b>	WB 1:500-2000 ELISA 1:5000-20000
<b>Immunogen</b>	Synthesized peptide derived from human protein . at AA range: 140-220
<b>Specificity</b>	ARL11 Polyclonal Antibody detects endogenous levels of protein.
<b>Formulation</b>	Liquid in PBS containing 50% glycerol, and 0.02% sodium azide..
<b>Storage</b>	Store at -20°C. Avoid repeated freeze-thaw cycles.
<b>Protein Name</b>	ADP-ribosylation factor-like protein 11 (ADP-ribosylation factor-like tumor suppressor protein 1)
<b>Gene Name</b>	ARL11 ARLTS1
<b>Cellular localization</b>	intracellular,
<b>Purification</b>	The antibody was affinity-purified from rabbit antiserum by affinity-chromatography using epitope-specific immunogen.
<b>Clonality</b>	Polyclonal

<b>Concentration</b>	1 mg/ml
<b>Observed band</b>	21kD
<b>Human Gene ID</b>	115761
<b>Human Swiss-Prot Number</b>	Q969Q4

#### Alternative Names

#### Background

This gene encodes a tumor suppressor related to the ADP-ribosylation factor (ARF) family of proteins. The encoded protein may play a role in apoptosis in a caspase-dependent manner. Polymorphisms in this gene have been associated with some familial cancers. [provided by RefSeq, May 2010].



Western blot analysis of lysates from K562 cells, primary antibody was diluted at 1:1000, 4° over night