

ASPM rabbit pAb**Cat#: orb773486 (Manual)**

For research use only. Not intended for diagnostic use.

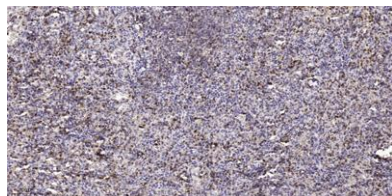
Product Name	ASPM rabbit pAb
Host species	Rabbit
Applications	IHC;IF
Species Cross-Reactivity	Human;Rat;Mouse;
Recommended dilutions	IHC-p 1:50-300
Immunogen	Synthesized peptide derived from human protein . at AA range: 1230-1310
Specificity	ASPM Polyclonal Antibody detects endogenous levels of protein.
Formulation	Liquid in PBS containing 50% glycerol, and 0.02% sodium azide..
Storage	Store at -20°C. Avoid repeated freeze-thaw cycles.
Protein Name	Abnormal spindle-like microcephaly-associated protein (Abnormal spindle protein homolog) (Asp homolog)
Gene Name	ASPM MCPH5
Cellular localization	Cytoplasm . Cytoplasm, cytoskeleton, spindle . Nucleus . The nuclear-cytoplasmic distribution could be regulated by the availability of calmodulin (By similarity). Localizes to spindle poles during mitosis (PubMed:19690332). Associates with microtubule mi
Purification	The antibody was affinity-purified from rabbit antiserum by affinity-chromatography using epitope-specific immunogen.

Clonality	Polyclonal
Concentration	1 mg/ml
Observed band	382kD
Human Gene ID	259266
Human Swiss-Prot Number	Q8IZT6

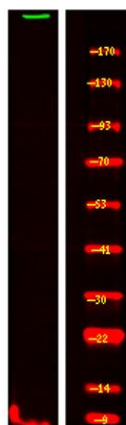
Alternative Names

Background

This gene is the human ortholog of the *Drosophila melanogaster* 'abnormal spindle' gene (*asp*), which is essential for normal mitotic spindle function in embryonic neuroblasts. Studies in mouse also suggest a role of this gene in mitotic spindle regulation, with a preferential role in regulating neurogenesis. Mutations in this gene are associated with microcephaly primary type 5. Multiple transcript variants encoding different isoforms have been found for this gene.[provided by RefSeq, May 2011],



Immunohistochemical analysis of paraffin-embedded human spleen tissue. 1,primary Antibody was diluted at 1:200(4° overnight). 2, Sodium citrate pH 6.0 was used for antigen retrieval(>98°C,20min). 3,Secondary antibody was diluted at 1:200



Western Blot analysis of K-562 cell using primary antibody at 1:1000 dilution. Secondary antibody (catalog#:RS23920) was diluted at 1:10000