

CENPO rabbit pAb

Cat#: orb773402 (Manual)

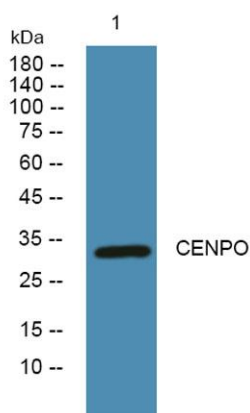
For research use only. Not intended for diagnostic use.

Product Name	CENPO rabbit pAb
Host species	Rabbit
Applications	WB;ELISA
Species Cross-Reactivity	Human;Rat;Mouse;
Recommended dilutions	WB 1:500-2000 ELISA 1:5000-20000
Immunogen	Synthesized peptide derived from human protein . at AA range: 220-300
Specificity	CENPO Polyclonal Antibody detects endogenous levels of protein.
Formulation	Liquid in PBS containing 50% glycerol, and 0.02% sodium azide..
Storage	Store at -20°C. Avoid repeated freeze-thaw cycles.
Protein Name	Centromere protein O (CENP-O) (Interphase centromere complex protein 36)
Gene Name	CENPO ICEN36 MCM21R
Cellular localization	Nucleus. Chromosome, centromere. Chromosome, centromere, kinetochore. The CENPA-CAD complex is probably recruited on centromeres by the CENPA-NAC complex.
Purification	The antibody was affinity-purified from rabbit antiserum by affinity-chromatography using epitope-specific immunogen.

Clonality	Polyclonal
Concentration	1 mg/ml
Observed band	33kD
Human Gene ID	79172
Human Swiss-Prot Number	Q9BU64
Alternative Names	

Background

This gene encodes a component of the interphase centromere complex. The encoded protein is localized to the centromere throughout the cell cycle and is required for bipolar spindle assembly, chromosome segregation and checkpoint signaling during mitosis. Alternatively spliced transcript variants encoding multiple protein isoforms have been observed for this gene. [provided by RefSeq, Dec 2010],



Western blot analysis of lysates from SW480 cells, primary antibody was diluted at 1:1000, 4° over night