

CENPN rabbit pAb**Cat#: orb773401 (Manual)**

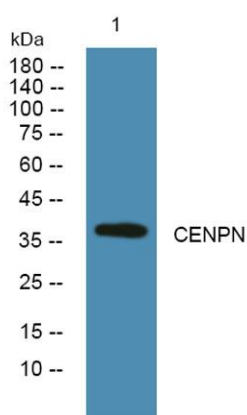
For research use only. Not intended for diagnostic use.

Product Name	CENPN rabbit pAb
Host species	Rabbit
Applications	WB;ELISA
Species Cross-Reactivity	Human;Rat;Mouse;
Recommended dilutions	WB 1:500-2000 ELISA 1:5000-20000
Immunogen	Synthesized peptide derived from human protein . at AA range: 200-280
Specificity	CENPN Polyclonal Antibody detects endogenous levels of protein.
Formulation	Liquid in PBS containing 50% glycerol, and 0.02% sodium azide..
Storage	Store at -20°C. Avoid repeated freeze-thaw cycles.
Protein Name	Centromere protein N (CENP-N) (Interphase centromere complex protein 32)
Gene Name	CENPN C16orf60 ICEN32 BM-309
Cellular localization	Nucleus. Chromosome, centromere, kinetochore. Localizes exclusively in the kinetochore domain of centromeres. Kinetochore-bound levels decrease when cells enter mitosis and increase again when cells exit mitosis.
Purification	The antibody was affinity-purified from rabbit antiserum by affinity-chromatography using epitope-specific immunogen.

Clonality	Polyclonal
Concentration	1 mg/ml
Observed band	37kD
Human Gene ID	55839
Human Swiss-Prot Number	Q96H22
Alternative Names	

Background

The protein encoded by this gene forms part of the nucleosome-associated complex and is important for kinetochore assembly. It is bound to kinetochores during S phase and G2 and recruits other proteins to the centromere. Pseudogenes of this gene are located on chromosome 2. Alternative splicing results in multiple transcript variants that encode different protein isoforms. [provided by RefSeq, Jul 2012],



Western blot analysis of lysates from A431 cells, primary antibody was diluted at 1:1000, 4° over night