

SYT8 rabbit pAb**Cat#: orb773213 (Manual)**

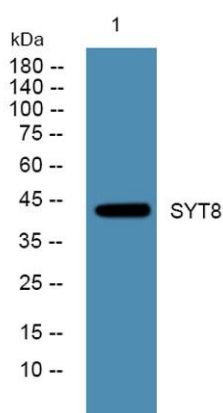
For research use only. Not intended for diagnostic use.

Product Name	SYT8 rabbit pAb
Host species	Rabbit
Applications	WB;ELISA
Species Cross-Reactivity	Human;Rat;Mouse;
Recommended dilutions	WB 1:500-2000 ELISA 1:5000-20000
Immunogen	Synthesized peptide derived from part region of human protein
Specificity	SYT8 Polyclonal Antibody detects endogenous levels of protein.
Formulation	Liquid in PBS containing 50% glycerol, and 0.02% sodium azide..
Storage	Store at -20°C. Avoid repeated freeze-thaw cycles.
Protein Name	Synaptotagmin-8 (Synaptotagmin VIII) (SytVIII)
Gene Name	SYT8
Cellular localization	Cell membrane ; Single-pass type III membrane protein . Cytoplasmic vesicle, secretory vesicle, acrosome .
Purification	The antibody was affinity-purified from rabbit antiserum by affinity-chromatography using epitope-specific immunogen.
Clonality	Polyclonal

Concentration	1 mg/ml
Observed band	44kD
Human Gene ID	90019
Human Swiss-Prot Number	Q8NBV8
Alternative Names	

Background

This gene encodes a member of the synaptotagmin protein family. Synaptotagmins are membrane proteins that are important in neurotransmission and hormone secretion, both of which involve regulated exocytosis. Expression of the encoded protein in human pancreatic islets has been connected to activity of the promoter for the insulin gene, on the same chromosome several hundred kilobases away (PMID: 21336277 and 22928559). This association would link response to glucose to insulin secretion. Alternative splicing results in multiple transcript variants encoding different isoforms. [provided by RefSeq, Mar 2014],



Western blot analysis of lysates from A431 cells, primary antibody was diluted at 1:1000, 4° over night