

SCN1B rabbit pAb**Cat#: orb773154 (Manual)**

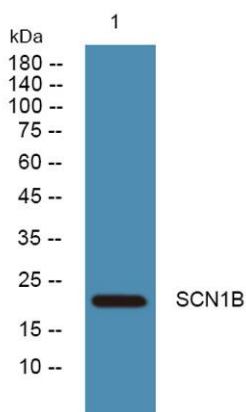
For research use only. Not intended for diagnostic use.

Product Name	SCN1B rabbit pAb
Host species	Rabbit
Applications	WB;ELISA
Species Cross-Reactivity	Human;Rat;Mouse
Recommended dilutions	WB 1:500-2000 ELISA 1:5000-20000
Immunogen	Synthesized peptide derived from part region of human protein
Specificity	SCN1B Polyclonal Antibody detects endogenous levels of protein.
Formulation	Liquid in PBS containing 50% glycerol, and 0.02% sodium azide..
Storage	Store at -20°C. Avoid repeated freeze-thaw cycles.
Protein Name	Sodium channel subunit beta-1
Gene Name	SCN1B
Cellular localization	[Isoform 1]: Cell membrane ; Single-pass type I membrane protein . Perikaryon . Cell projection . Cell projection, axon . Detected at nodes of Ranvier on the sciatic nerve. .; [Isoform 2]: Perikaryon . Cell projection . Secreted . Detected on Purkinje cells and their cell projections and on neuronal cell projections. .
Purification	The antibody was affinity-purified from rabbit antiserum by affinity-chromatography using epitope-specific immunogen.

Clonality	Polyclonal
Concentration	1 mg/ml
Observed band	23kD
Human Gene ID	6324
Human Swiss-Prot Number	Q07699
Alternative Names	

Background

Voltage-gated sodium channels are heteromeric proteins that function in the generation and propagation of action potentials in muscle and neuronal cells. They are composed of one alpha and two beta subunits, where the alpha subunit provides channel activity and the beta-1 subunit modulates the kinetics of channel inactivation. This gene encodes a sodium channel beta-1 subunit. Mutations in this gene result in generalized epilepsy with febrile seizures plus, Brugada syndrome 5, and defects in cardiac conduction. Multiple transcript variants encoding different isoforms have been found for this gene.[provided by RefSeq, Oct 2009],



Western blot analysis of lysates from A431 cells, primary antibody was diluted at 1:1000, 4° over night