

**CCL28 rabbit pAb****Cat#: orb773143 (Manual)**

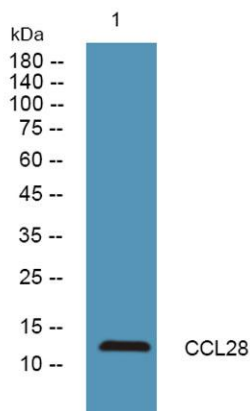
For research use only. Not intended for diagnostic use.

<b>Product Name</b>	CCL28 rabbit pAb
<b>Host species</b>	Rabbit
<b>Applications</b>	WB;ELISA
<b>Species Cross-Reactivity</b>	Human;Mouse
<b>Recommended dilutions</b>	WB 1:500-2000 ELISA 1:5000-20000
<b>Immunogen</b>	Synthesized peptide derived from human protein . at AA range: 50-130
<b>Specificity</b>	CCL28 Polyclonal Antibody detects endogenous levels of protein.
<b>Formulation</b>	Liquid in PBS containing 50% glycerol, and 0.02% sodium azide..
<b>Storage</b>	Store at -20°C. Avoid repeated freeze-thaw cycles.
<b>Protein Name</b>	C-C motif chemokine 28 (Mucosae-associated epithelial chemokine) (MEC) (Protein CCK1) (Small-inducible cytokine A28)
<b>Gene Name</b>	CCL28 SCYA28
<b>Cellular localization</b>	Secreted.
<b>Purification</b>	The antibody was affinity-purified from rabbit antiserum by affinity-chromatography using epitope-specific immunogen.
<b>Clonality</b>	Polyclonal

<b>Concentration</b>	1 mg/ml
<b>Observed band</b>	13kD
<b>Human Gene ID</b>	56477
<b>Human Swiss-Prot Number</b>	Q9NRJ3
<b>Alternative Names</b>	

### Background

This antimicrobial gene belongs to the subfamily of small cytokine CC genes. Cytokines are a family of secreted proteins involved in immunoregulatory and inflammatory processes. The CC cytokines are proteins characterized by two adjacent cysteines. The cytokine encoded by this gene displays chemotactic activity for resting CD4 or CD8 T cells and eosinophils. The product of this gene binds to chemokine receptors CCR3 and CCR10. This chemokine may play a role in the physiology of extracutaneous epithelial tissues, including diverse mucosal organs. Multiple transcript variants encoding two different isoforms have been found for this gene. [provided by RefSeq, Sep 2014],



**Western blot analysis of lysates from K562 cells, primary antibody was diluted at 1:1000, 4°over night**