

SPB10 rabbit pAb**Cat#: orb773109 (Manual)**

For research use only. Not intended for diagnostic use.

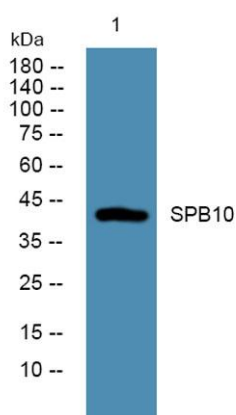
Product Name	SPB10 rabbit pAb
Host species	Rabbit
Applications	WB;ELISA
Species Cross-Reactivity	Human;Rat;Mouse
Recommended dilutions	WB 1:500-2000 ELISA 1:5000-20000
Immunogen	Synthesized peptide derived from part region of human protein
Specificity	SPB10 Polyclonal Antibody detects endogenous levels of protein.
Formulation	Liquid in PBS containing 50% glycerol, and 0.02% sodium azide..
Storage	Store at -20°C. Avoid repeated freeze-thaw cycles.
Protein Name	Serpin B10 (Bomapin) (Peptidase inhibitor 10) (PI-10)
Gene Name	SERPINB10 PI10
Cellular localization	Nucleus. Cytoplasm. Mostly found in the nucleus.
Purification	The antibody was affinity-purified from rabbit antiserum by affinity-chromatography using epitope-specific immunogen.
Clonality	Polyclonal

Concentration	1 mg/ml
Observed band	43kD
Human Gene ID	5273
Human Swiss-Prot Number	P48595

Alternative Names

Background

This gene is a member of the serpin peptidase inhibitor, clade B family and is found in a cluster of other similar genes on chromosome 18. The protein encoded by this gene appears to help control the regulation of protease functions during hematopoiesis. Variations in this gene may increase the risk of prostate cancer. [provided by RefSeq, Dec 2015],



Western blot analysis of lysates from SH-SY5Y cells, primary antibody was diluted at 1:1000, 4°C over night