

**STK40 rabbit pAb****Cat#: orb773080 (Manual)**

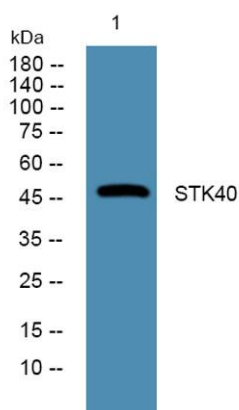
For research use only. Not intended for diagnostic use.

<b>Product Name</b>	STK40 rabbit pAb
<b>Host species</b>	Rabbit
<b>Applications</b>	WB;ELISA
<b>Species Cross-Reactivity</b>	Human;Rat;Mouse
<b>Recommended dilutions</b>	WB 1:500-2000 ELISA 1:5000-20000
<b>Immunogen</b>	Synthesized peptide derived from human protein . at AA range: 30-110
<b>Specificity</b>	STK40 Polyclonal Antibody detects endogenous levels of protein.
<b>Formulation</b>	Liquid in PBS containing 50% glycerol, and 0.02% sodium azide..
<b>Storage</b>	Store at -20°C. Avoid repeated freeze-thaw cycles.
<b>Protein Name</b>	Serine/threonine-protein kinase 40 (EC 2.7.11.1) (SINK-homologous serine/threonine-protein kinase) (Sugen kinase 495) (SgK495)
<b>Gene Name</b>	STK40 SGK495 SHIK
<b>Cellular localization</b>	Nucleus . Cytoplasm .
<b>Purification</b>	The antibody was affinity-purified from rabbit antiserum by affinity-chromatography using epitope-specific immunogen.
<b>Clonality</b>	Polyclonal

<b>Concentration</b>	1 mg/ml
<b>Observed band</b>	47kD
<b>Human Gene ID</b>	83931
<b>Human Swiss-Prot Number</b>	Q8N2I9
<b>Alternative Names</b>	

### Background

catalytic activity:ATP + a protein = ADP + a phosphoprotein.,function:May be a negative regulator of NF-kappa-B and p53-mediated gene transcription.,similarity:Belongs to the protein kinase superfamily. CAMK Ser/Thr protein kinase family.,similarity:Contains 1 protein kinase domain.,tissue specificity:Strongly expressed in heart, brain, placenta, lung, skeletal muscle, kidney, spleen, thymus, prostate, liver, pancreas, testis, ovary, small intestine, colon and peripheral blood leukocytes.,



Western blot analysis of lysates from A431 cells, primary antibody was diluted at 1:1000, 4° over night