

SEP11 rabbit pAb**Cat#: orb773072 (Manual)**

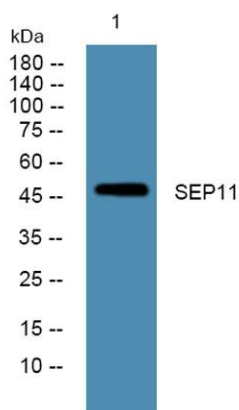
For research use only. Not intended for diagnostic use.

| | |
|---------------------------------|--|
| Product Name | SEP11 rabbit pAb |
| Host species | Rabbit |
| Applications | WB;ELISA |
| Species Cross-Reactivity | Human;Mouse;Rat |
| Recommended dilutions | WB 1:500-2000 ELISA 1:5000-20000 |
| Immunogen | Synthesized peptide derived from human protein . at AA range: 200-280 |
| Specificity | SEP11 Polyclonal Antibody detects endogenous levels of protein. |
| Formulation | Liquid in PBS containing 50% glycerol, and 0.02% sodium azide.. |
| Storage | Store at -20°C. Avoid repeated freeze-thaw cycles. |
| Protein Name | Septin-11 |
| Gene Name | 42989 |
| Cellular localization | Cytoplasm, cytoskeleton. Cell junction, synapse. Cell projection, dendritic spine. Cell projection, axon . Partly colocalizes with stress fibers and microtubules. During bacterial infection, displays a collar shape structure next to actin at the pole of invading bacteria. |
| Purification | The antibody was affinity-purified from rabbit antiserum by affinity-chromatography using epitope-specific immunogen. |

| | |
|--------------------------------|------------|
| Clonality | Polyclonal |
| Concentration | 1 mg/ml |
| Observed band | 47kD |
| Human Gene ID | 55752 |
| Human Swiss-Prot Number | Q9NVA2 |
| Alternative Names | |

Background

SEPT11 belongs to the conserved septin family of filament-forming cytoskeletal GTPases that are involved in a variety of cellular functions including cytokinesis and vesicle trafficking (Hanai et al., 2004 [PubMed 15196925]; Nagata et al., 2004 [PubMed 15485874]).[supplied by OMIM, Jul 2009],



Western blot analysis of lysates from K562 cells, primary antibody was diluted at 1:1000, 4° over night