

RHOQ rabbit pAb

Cat#: orb773052 (Manual)

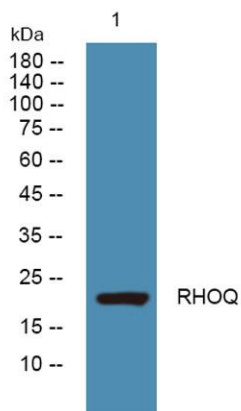
For research use only. Not intended for diagnostic use.

Product Name	RHOQ rabbit pAb
Host species	Rabbit
Applications	WB;ELISA
Species Cross-Reactivity	Human;Mouse;Rat
Recommended dilutions	WB 1:500-2000 ELISA 1:5000-20000
Immunogen	Synthesized peptide derived from human protein . at AA range: 60-140
Specificity	RHOQ Polyclonal Antibody detects endogenous levels of protein.
Formulation	Liquid in PBS containing 50% glycerol, and 0.02% sodium azide..
Storage	Store at -20°C. Avoid repeated freeze-thaw cycles.
Protein Name	Rho-related GTP-binding protein RhoQ (Ras-like protein TC10) (Ras-like protein family member 7A)
Gene Name	RHOQ ARHQ RASL7A TC10
Cellular localization	Cytoplasm . Cell membrane ; Lipid-anchor .
Purification	The antibody was affinity-purified from rabbit antiserum by affinity-chromatography using epitope-specific immunogen.
Clonality	Polyclonal

Concentration	1 mg/ml
Observed band	22kD
Human Gene ID	23433
Human Swiss-Prot Number	P17081
Alternative Names	

Background

This gene encodes a member of the Rho family of small GTPases, which cycle between inactive GDP-bound and active GTP-bound states and function as molecular switches in signal transduction cascades. Rho proteins promote reorganization of the actin cytoskeleton and regulate cell shape, attachment, and motility. The encoded protein is an important signalling protein for sarcomere assembly and has been shown to play a significant role in the exocytosis of the solute carrier family 2, facilitated glucose transporter member 4 and other proteins, possibly acting as the signal that turns on the membrane fusion machinery. Three related pseudogene have been identified on chromosomes 2 and 14. [provided by RefSeq, Aug 2011],



Western blot analysis of lysates from HCT116 cells, primary antibody was diluted at 1:1000, 4° over night