

RND2 rabbit pAb**Cat#: orb773051 (Manual)**

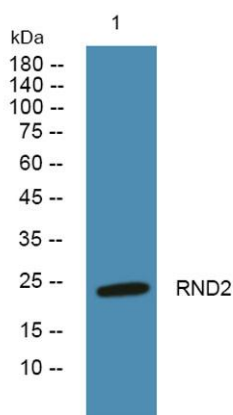
For research use only. Not intended for diagnostic use.

Product Name	RND2 rabbit pAb
Host species	Rabbit
Applications	WB;ELISA
Species Cross-Reactivity	Human;Mouse
Recommended dilutions	WB 1:500-2000 ELISA 1:5000-20000
Immunogen	Synthesized peptide derived from human protein . at AA range: 140-220
Specificity	RND2 Polyclonal Antibody detects endogenous levels of protein.
Formulation	Liquid in PBS containing 50% glycerol, and 0.02% sodium azide..
Storage	Store at -20°C. Avoid repeated freeze-thaw cycles.
Protein Name	Rho-related GTP-binding protein RhoN (Rho family GTPase 2) (Rho-related GTP-binding protein Rho7) (Rnd2)
Gene Name	RND2 ARHN RHO7
Cellular localization	Cytoplasmic vesicle, secretory vesicle, acrosome membrane ; Lipid-anchor ; Cytoplasmic side . Colocalizes with RACGAP1 in Golgi-derived proacrosomal vesicles and the acrosome. .
Purification	The antibody was affinity-purified from rabbit antiserum by affinity-chromatography using epitope-specific immunogen.

Clonality	Polyclonal
Concentration	1 mg/ml
Observed band	24kD
Human Gene ID	8153
Human Swiss-Prot Number	P52198
Alternative Names	

Background

This gene encodes a member of the Rho GTPase family, whose members play a key role in the regulation of actin cytoskeleton organization in response to extracellular growth factors. This particular family member has been implicated in the regulation of neuronal morphology and endosomal trafficking. The gene localizes to chromosome 17 and is the centromeric neighbor of the breast-ovarian cancer susceptibility gene BRCA1. [provided by RefSeq, Jul 2008],



Western blot analysis of lysates from Jarkat cells, primary antibody was diluted at 1:1000, 4° over night