

RHOJ rabbit pAb**Cat#: orb773050 (Manual)**

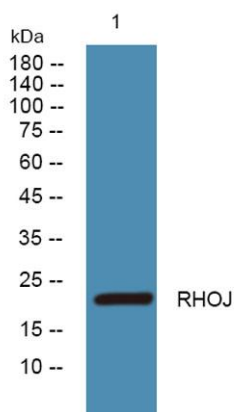
For research use only. Not intended for diagnostic use.

Product Name	RHOJ rabbit pAb
Host species	Rabbit
Applications	WB;ELISA
Species Cross-Reactivity	Human;Mouse
Recommended dilutions	WB 1:500-2000 ELISA 1:5000-20000
Immunogen	Synthesized peptide derived from human protein . at AA range: 30-110
Specificity	RHOJ Polyclonal Antibody detects endogenous levels of protein.
Formulation	Liquid in PBS containing 50% glycerol, and 0.02% sodium azide..
Storage	Store at -20°C. Avoid repeated freeze-thaw cycles.
Protein Name	Rho-related GTP-binding protein RhoJ (Ras-like protein family member 7B) (Tc10-like GTP-binding protein)
Gene Name	RHOJ ARHJ RASL7B RHOI TCL
Cellular localization	Cell membrane ; Lipid-anchor ; Cytoplasmic side . Localization to the plasma membrane is regulated by GLUL. .
Purification	The antibody was affinity-purified from rabbit antiserum by affinity-chromatography using epitope-specific immunogen.
Clonality	Polyclonal

Concentration	1 mg/ml
Observed band	23kD
Human Gene ID	57381
Human Swiss-Prot Number	Q9H4E5
Alternative Names	

Background

This gene encodes one of the many small GTP-binding proteins in the Rho family shown to be associated with focal adhesions in endothelial cells (PMID: 21148427, 22103495). The encoded protein is activated by vascular endothelial growth factor and may regulate angiogenesis. [provided by RefSeq, Dec 2011],



Western blot analysis of lysates from K562 cells, primary antibody was diluted at 1:1000, 4° over night