

RFPL2 rabbit pAb**Cat#: orb773029 (Manual)**

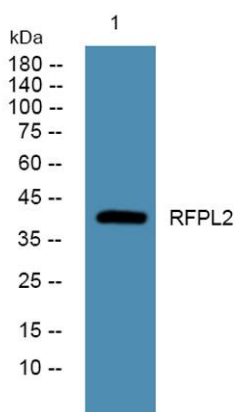
For research use only. Not intended for diagnostic use.

Product Name	RFPL2 rabbit pAb
Host species	Rabbit
Applications	WB;ELISA
Species Cross-Reactivity	Human;Rat;Mouse;
Recommended dilutions	WB 1:500-2000 ELISA 1:5000-20000
Immunogen	Synthesized peptide derived from human protein . at AA range: 100-180
Specificity	RFPL2 Polyclonal Antibody detects endogenous levels of protein.
Formulation	Liquid in PBS containing 50% glycerol, and 0.02% sodium azide..
Storage	Store at -20°C. Avoid repeated freeze-thaw cycles.
Protein Name	Ret finger protein-like 2 (RING finger protein 79)
Gene Name	RFPL2 RNF79
Cellular localization	
Purification	The antibody was affinity-purified from rabbit antiserum by affinity-chromatography using epitope-specific immunogen.
Clonality	Polyclonal

Concentration	1 mg/ml
Observed band	41kD
Human Gene ID	10739
Human Swiss-Prot Number	O75678
Alternative Names	

Background

similarity:Contains 1 B30.2/SPRY domain.,similarity:Contains 1 RING-type zinc finger.,tissue specificity:Seems to be expressed in prostate and less abundantly in adult brain, fetal liver, and fetal kidney.,



Western blot analysis of lysates from DU145 cells, primary antibody was diluted at 1:1000, 4° over night