

RAB9B rabbit pAb**Cat#: orb773011 (Manual)**

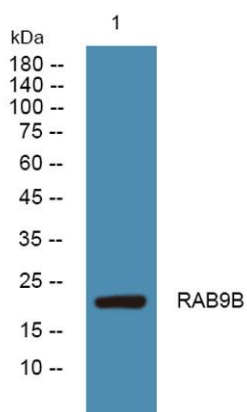
For research use only. Not intended for diagnostic use.

Product Name	RAB9B rabbit pAb
Host species	Rabbit
Applications	WB;ELISA
Species Cross-Reactivity	Human;Mouse
Recommended dilutions	WB 1:500-2000 ELISA 1:5000-20000
Immunogen	Synthesized peptide derived from human protein . at AA range: 80-160
Specificity	RAB9B Polyclonal Antibody detects endogenous levels of protein.
Formulation	Liquid in PBS containing 50% glycerol, and 0.02% sodium azide..
Storage	Store at -20°C. Avoid repeated freeze-thaw cycles.
Protein Name	Ras-related protein Rab-9B (Rab-9-like protein) (Rab-9L)
Gene Name	RAB9B RAB9L
Cellular localization	Cell membrane ; Lipid-anchor ; Cytoplasmic side . Cytoplasmic vesicle, phagosome . Cytoplasmic vesicle, phagosome membrane ; Lipid-anchor ; Cytoplasmic side . Recruited to phagosomes containing S.aureus or M.tuberculosis.
Purification	The antibody was affinity-purified from rabbit antiserum by affinity-chromatography using epitope-specific immunogen.

Clonality	Polyclonal
Concentration	1 mg/ml
Observed band	22kD
Human Gene ID	51209
Human Swiss-Prot Number	Q9NP90
Alternative Names	

Background

This gene encodes a member of a subfamily of RAS small guanosine triphosphate (GTP)-binding proteins that regulate membrane trafficking. The encoded protein may be involved in endosome-to-Golgi transport. [provided by RefSeq, Jan 2010],



Western blot analysis of lysates from Jarkat cells, primary antibody was diluted at 1:1000, 4° over night