

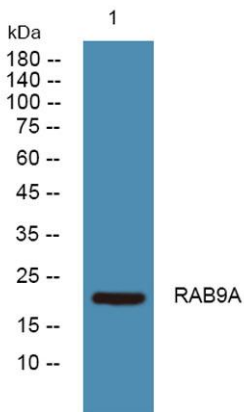
**RAB9A rabbit pAb****Cat#: orb773010 (Manual)**

For research use only. Not intended for diagnostic use.

<b>Product Name</b>	RAB9A rabbit pAb
<b>Host species</b>	Rabbit
<b>Applications</b>	WB;ELISA
<b>Species Cross-Reactivity</b>	Human;Rat;Mouse
<b>Recommended dilutions</b>	WB 1:500-2000 ELISA 1:5000-20000
<b>Immunogen</b>	Synthesized peptide derived from human protein . at AA range: 80-160
<b>Specificity</b>	RAB9A Polyclonal Antibody detects endogenous levels of protein.
<b>Formulation</b>	Liquid in PBS containing 50% glycerol, and 0.02% sodium azide..
<b>Storage</b>	Store at -20°C. Avoid repeated freeze-thaw cycles.
<b>Protein Name</b>	Ras-related protein Rab-9A
<b>Gene Name</b>	RAB9A RAB9
<b>Cellular localization</b>	Cell membrane ; Lipid-anchor ; Cytoplasmic side . Endoplasmic reticulum membrane . Golgi apparatus membrane . Late endosome . Cytoplasmic vesicle, phagosome membrane ; Lipid-anchor ; Cytoplasmic side . Cytoplasmic vesicle, phagosome . Cytoplasmic vesicle membrane . Melanosome . Colocalizes with OSBPL1A at the late endosome (PubMed:16176980). Recruited to phagosomes containing S.aureus or M.tuberculosis (PubMed:21255211). .

<b>Purification</b>	The antibody was affinity-purified from rabbit antiserum by affinity-chromatography using epitope-specific immunogen.
<b>Clonality</b>	Polyclonal
<b>Concentration</b>	1 mg/ml
<b>Observed band</b>	22kD
<b>Human Gene ID</b>	9367
<b>Human Swiss-Prot Number</b>	P51151
<b>Alternative Names</b>	

**Background** function:Involved in the transport of proteins between the endosomes and the trans Golgi network.,similarity:Belongs to the small GTPase superfamily. Rab family.,



Western blot analysis of lysates from U2OS cells, primary antibody was diluted at 1:1000, 4° over night