

**RAB5B rabbit pAb****Cat#: orb773006 (Manual)**

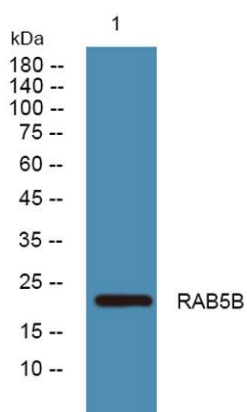
For research use only. Not intended for diagnostic use.

<b>Product Name</b>	RAB5B rabbit pAb
<b>Host species</b>	Rabbit
<b>Applications</b>	WB;ELISA
<b>Species Cross-Reactivity</b>	Human;Mouse
<b>Recommended dilutions</b>	WB 1:500-2000 ELISA 1:5000-20000
<b>Immunogen</b>	Synthesized peptide derived from human protein . at AA range: 90-170
<b>Specificity</b>	RAB5B Polyclonal Antibody detects endogenous levels of protein.
<b>Formulation</b>	Liquid in PBS containing 50% glycerol, and 0.02% sodium azide..
<b>Storage</b>	Store at -20°C. Avoid repeated freeze-thaw cycles.
<b>Protein Name</b>	Ras-related protein Rab-5B
<b>Gene Name</b>	RAB5B
<b>Cellular localization</b>	Cell membrane ; Lipid-anchor ; Cytoplasmic side . Early endosome membrane ; Lipid-anchor . Melanosome . Enriched in stage I melanosomes. .
<b>Purification</b>	The antibody was affinity-purified from rabbit antiserum by affinity-chromatography using epitope-specific immunogen.
<b>Clonality</b>	Polyclonal

<b>Concentration</b>	1 mg/ml
<b>Observed band</b>	23kD
<b>Human Gene ID</b>	5869
<b>Human Swiss-Prot Number</b>	P61020
<b>Alternative Names</b>	

### Background

enzyme regulation:Regulated by guanine nucleotide exchange factors (GEFs) which promote the exchange of bound GDP for free GTP.,function:Protein transport. Probably involved in vesicular traffic.,similarity:Belongs to the small GTPase superfamily. Rab family.,subcellular location:Enriched in stage I melanosomes.,subunit:Binds EEA1. Interacts with RIN2 and RIN3, which probably regulate its pathway, possibly by acting as GEFs.,



Western blot analysis of lysates from K562 cells, primary antibody was diluted at 1:1000, 4° over night