

RAB43 rabbit pAb**Cat#: orb773005 (Manual)**

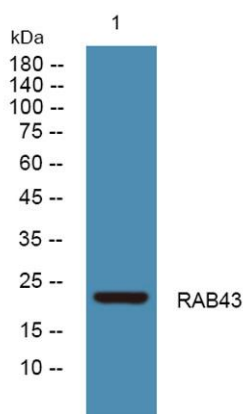
For research use only. Not intended for diagnostic use.

Product Name	RAB43 rabbit pAb
Host species	Rabbit
Applications	WB;ELISA
Species Cross-Reactivity	Human;Rat;Mouse;
Recommended dilutions	WB 1:500-2000 ELISA 1:5000-20000
Immunogen	Synthesized peptide derived from human protein . at AA range: 90-170
Specificity	RAB43 Polyclonal Antibody detects endogenous levels of protein.
Formulation	Liquid in PBS containing 50% glycerol, and 0.02% sodium azide..
Storage	Store at -20°C. Avoid repeated freeze-thaw cycles.
Protein Name	Ras-related protein Rab-43 (Ras-related protein Rab-41)
Gene Name	RAB43 RAB41
Cellular localization	Cytoplasmic vesicle, phagosome . Cytoplasmic vesicle, phagosome membrane ; Lipid-anchor ; Cytoplasmic side . Golgi apparatus . Golgi apparatus, trans-Golgi network membrane ; Lipid-anchor . Golgi apparatus, trans-Golgi network . Recruited to phagosomes containing S.aureus or M.tuberculosis (PubMed:2125521 f). .
Purification	The antibody was affinity-purified from rabbit antiserum by affinity-chromatography using epitope-specific immunogen.

Clonality	Polyclonal
Concentration	1 mg/ml
Observed band	23kD
Human Gene ID	339122
Human Swiss-Prot Number	Q86YS6
Alternative Names	

Background

similarity:Belongs to the small GTPase superfamily. Rab family.,tissue specificity:Widely expressed in brain, testis, lung, heart, ovary, colon, kidney, uterus and spleen but not in liver.,



Western blot analysis of lysates from K562 cells, primary antibody was diluted at 1:1000, 4°over night