

**RAB32 rabbit pAb****Cat#: orb772997 (Manual)**

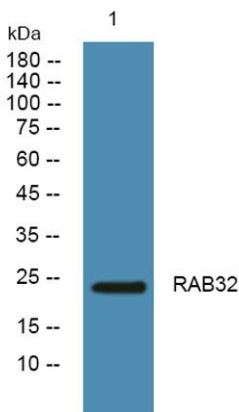
For research use only. Not intended for diagnostic use.

<b>Product Name</b>	RAB32 rabbit pAb
<b>Host species</b>	Rabbit
<b>Applications</b>	WB;ELISA
<b>Species Cross-Reactivity</b>	Human;Mouse
<b>Recommended dilutions</b>	WB 1:500-2000 ELISA 1:5000-20000
<b>Immunogen</b>	Synthesized peptide derived from human protein . at AA range: 160-240
<b>Specificity</b>	RAB32 Polyclonal Antibody detects endogenous levels of protein.
<b>Formulation</b>	Liquid in PBS containing 50% glycerol, and 0.02% sodium azide..
<b>Storage</b>	Store at -20°C. Avoid repeated freeze-thaw cycles.
<b>Protein Name</b>	Ras-related protein Rab-32
<b>Gene Name</b>	RAB32
<b>Cellular localization</b>	Mitochondrion . Mitochondrion outer membrane ; Lipid-anchor . Cytoplasmic vesicle, phagosome . Cytoplasmic vesicle, phagosome membrane ; Lipid-anchor ; Cytoplasmic side . Melanosome . Melanosome membrane . Recruited to phagosomes containing S.aureus or M.tuberculosis (PubMed:21255211). The BLOC-3 complex, a heterodimer of HPS1 and HPS4 promotes its membrane localization (PubMed:23084991) . .

<b>Purification</b>	The antibody was affinity-purified from rabbit antiserum by affinity-chromatography using epitope-specific immunogen.
<b>Clonality</b>	Polyclonal
<b>Concentration</b>	1 mg/ml
<b>Observed band</b>	24kD
<b>Human Gene ID</b>	10981
<b>Human Swiss-Prot Number</b>	Q13637
<b>Alternative Names</b>	

## Background

The protein encoded by this gene anchors the type II regulatory subunit of protein kinase A to the mitochondrion and aids in mitochondrial fission. The encoded protein also appears to be involved in autophagy and melanosome secretion. Variations in this gene may be linked to leprosy. [provided by RefSeq, Dec 2015],



Western blot analysis of lysates from SH-SY5Y cells, primary antibody was diluted at 1:1000, 4° over night