

RAB1A rabbit pAb**Cat#: orb772990 (Manual)**

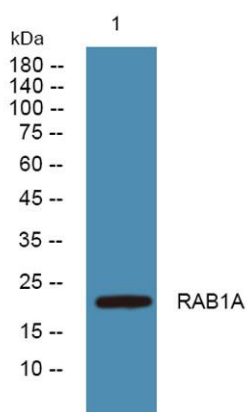
For research use only. Not intended for diagnostic use.

Product Name	RAB1A rabbit pAb
Host species	Rabbit
Applications	WB;ELISA
Species Cross-Reactivity	Human;Rat;Mouse
Recommended dilutions	WB 1:500-2000 ELISA 1:5000-20000
Immunogen	Synthesized peptide derived from human protein . at AA range: 50-130
Specificity	RAB1A Polyclonal Antibody detects endogenous levels of protein.
Formulation	Liquid in PBS containing 50% glycerol, and 0.02% sodium azide..
Storage	Store at -20°C. Avoid repeated freeze-thaw cycles.
Protein Name	Ras-related protein Rab-1A (YPT1-related protein)
Gene Name	RAB1A RAB1
Cellular localization	Golgi apparatus . Endoplasmic reticulum . Early endosome . Cytoplasm, cytosol . Membrane . Melanosome . Alternates between membrane-associated and cytosolic forms. .
Purification	The antibody was affinity-purified from rabbit antiserum by affinity-chromatography using epitope-specific immunogen.
Clonality	Polyclonal

Concentration	1 mg/ml
Observed band	22kD
Human Gene ID	5861
Human Swiss-Prot Number	P62820
Alternative Names	

Background

This gene encodes a member of the Ras superfamily of GTPases. Members of the gene family cycle between inactive GDP-bound and active GTP-bound forms. This small GTPase controls vesicle traffic from the endoplasmic reticulum to the Golgi apparatus. Multiple alternatively spliced transcript variants have been identified for this gene which encode different protein isoforms. [provided by RefSeq, Oct 2008],



Western blot analysis of lysates from DU145 cells, primary antibody was diluted at 1:1000, 4° over night