

**RSPH1 rabbit pAb****Cat#: orb772960 (Manual)**

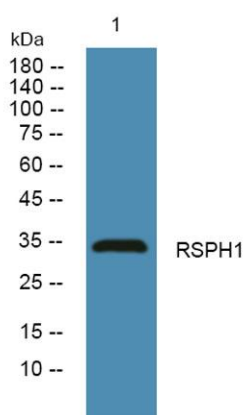
For research use only. Not intended for diagnostic use.

<b>Product Name</b>	RSPH1 rabbit pAb
<b>Host species</b>	Rabbit
<b>Applications</b>	WB;ELISA
<b>Species Cross-Reactivity</b>	Human;Mouse
<b>Recommended dilutions</b>	WB 1:500-2000 ELISA 1:5000-20000
<b>Immunogen</b>	Synthesized peptide derived from human protein . at AA range: 50-130
<b>Specificity</b>	RSPH1 Polyclonal Antibody detects endogenous levels of protein.
<b>Formulation</b>	Liquid in PBS containing 50% glycerol, and 0.02% sodium azide..
<b>Storage</b>	Store at -20°C. Avoid repeated freeze-thaw cycles.
<b>Protein Name</b>	Radial spoke head 1 homolog (Cancer/testis antigen 79) (CT79) (Male meiotic metaphase chromosome-associated acidic protein) (Meichroacidin) (Testis-specific gene A2 protein)
<b>Gene Name</b>	RSPH1 TSA2 TSGA2
<b>Cellular localization</b>	Cytoplasm . Cell projection, cilium . Cytoplasmic in late spermatocytes, secondary spermatocytes and round spermatids. Gathered around metaphase chromosomes during meiotic divisions (By similarity). .
<b>Purification</b>	The antibody was affinity-purified from rabbit antiserum by affinity-chromatography using epitope-specific immunogen.

<b>Clonality</b>	Polyclonal
<b>Concentration</b>	1 mg/ml
<b>Observed band</b>	33kD
<b>Human Gene ID</b>	89765
<b>Human Swiss-Prot Number</b>	Q8WYR4
<b>Alternative Names</b>	

### Background

This gene encodes a male meiotic metaphase chromosome-associated acidic protein. This gene is expressed in tissues with motile cilia or flagella, including the trachea, lungs, airway brushings, and testes. Mutations in this gene result in primary ciliary dyskinesia-24. Alternatively spliced transcript variants encoding different isoforms have been found for this gene. [provided by RefSeq, Sep 2014],



**Western blot analysis of lysates from U2OS cells, primary antibody was diluted at 1:1000, 4° over night**