

**PPM1E rabbit pAb****Cat#: orb772932 (Manual)**

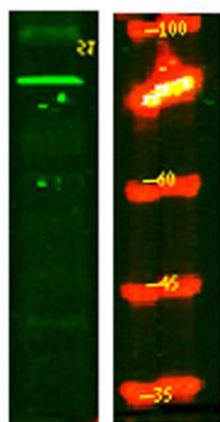
For research use only. Not intended for diagnostic use.

<b>Product Name</b>	PPM1E rabbit pAb
<b>Host species</b>	Rabbit
<b>Applications</b>	WB;ELISA
<b>Species Cross-Reactivity</b>	Human;Mouse;Rat
<b>Recommended dilutions</b>	WB 1:500-2000 ELISA 1:5000-20000
<b>Immunogen</b>	Synthesized peptide derived from human protein . at AA range: 460-540
<b>Specificity</b>	PPM1E Polyclonal Antibody detects endogenous levels of protein.
<b>Formulation</b>	Liquid in PBS containing 50% glycerol, and 0.02% sodium azide..
<b>Storage</b>	Store at -20°C. Avoid repeated freeze-thaw cycles.
<b>Protein Name</b>	Protein phosphatase 1E (EC 3.1.3.16) (Ca(2+)/calmodulin-dependent protein kinase phosphatase N) (CaMKP-N) (CaMKP-nucleus) (CaMKN) (Partner of PIX 1) (Partner of PIX-alpha) (Partner of PIXA)
<b>Gene Name</b>	PPM1E CAMKN KIAA1072 POPX1
<b>Cellular localization</b>	Nucleus . Cytoplasm . A truncated form, major form, with the C-terminal part missing, is mostly found in the cytoplasm and a little in the nucleus. The full-length, minor form, is found in the nucleus. .
<b>Purification</b>	The antibody was affinity-purified from rabbit antiserum by affinity-chromatography using epitope-specific immunogen.

<b>Clonality</b>	Polyclonal
<b>Concentration</b>	1 mg/ml
<b>Observed band</b>	84kD
<b>Human Gene ID</b>	
<b>Human Swiss-Prot Number</b>	Q8WY54
<b>Alternative Names</b>	

## Background

This gene encodes a member of the PPM family of serine/threonine-protein phosphatases. The encoded protein is localized to the nucleus and dephosphorylates and inactivates multiple substrates including serine/threonine-protein kinase PAK 1, 5'-AMP-activated protein kinase (AMPK) and the multifunctional calcium/calmodulin-dependent protein kinases. Alternatively spliced transcript variants have been observed for this gene. [provided by RefSeq, May 2012],



Western Blot analysis of HeLa lysis, using primary antibody at 1:1000 dilution. Secondary antibody(catalog#:RS23920) was diluted at 1:10000