

KCNE1 rabbit pAb**Cat#: orb772900 (Manual)**

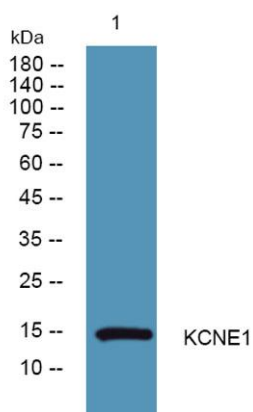
For research use only. Not intended for diagnostic use.

Product Name	KCNE1 rabbit pAb
Host species	Rabbit
Applications	WB;ELISA
Species Cross-Reactivity	Human;Rat;Mouse
Recommended dilutions	WB 1:500-2000 ELISA 1:5000-20000
Immunogen	Synthesized peptide derived from human protein . at AA range: 40-120
Specificity	KCNE1 Polyclonal Antibody detects endogenous levels of protein.
Formulation	Liquid in PBS containing 50% glycerol, and 0.02% sodium azide..
Storage	Store at -20°C. Avoid repeated freeze-thaw cycles.
Protein Name	Potassium voltage-gated channel subfamily E member 1 (Delayed rectifier potassium channel subunit Isk) (IKs producing slow voltage-gated potassium channel subunit beta Mink) (Minimal potassium channel
Gene Name	KCNE1
Cellular localization	Cell membrane ; Single-pass type I membrane protein . Apical cell membrane . Membrane raft . Colocalizes with KCNB1 at the plasma membrane (By similarity). Targets to the membrane raft when associated with KCNQ1 (PubMed:20533308). .

Purification	The antibody was affinity-purified from rabbit antiserum by affinity-chromatography using epitope-specific immunogen.
Clonality	Polyclonal
Concentration	1 mg/ml
Observed band	14kD
Human Gene ID	3753
Human Swiss-Prot Number	P15382
Alternative Names	

Background

potassium voltage-gated channel subfamily E regulatory subunit 1(KCNE1)
Homo sapiens The product of this gene belongs to the potassium channel KCNE family. Potassium ion channels are essential to many cellular functions and show a high degree of diversity, varying in their electrophysiologic and pharmacologic properties. This gene encodes a transmembrane protein known to associate with the product of the KVLQT1 gene to form the delayed rectifier potassium channel. Mutation in this gene are associated with both Jervell and Lange-Nielsen and Romano-Ward forms of long-QT syndrome. Alternatively spliced transcript variants encoding the same protein have been identified. [provided by RefSeq, Jul 2008],



Western blot analysis of lysates from HCT116 cells, primary antibody was diluted at 1:1000, 4°C over night