

**PAR6G rabbit pAb****Cat#: orb772849 (Manual)**

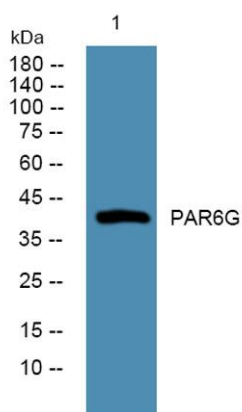
For research use only. Not intended for diagnostic use.

<b>Product Name</b>	PAR6G rabbit pAb
<b>Host species</b>	Rabbit
<b>Applications</b>	WB;ELISA
<b>Species Cross-Reactivity</b>	Human;Mouse
<b>Recommended dilutions</b>	WB 1:500-2000 ELISA 1:5000-20000
<b>Immunogen</b>	Synthesized peptide derived from human protein . at AA range: 240-320
<b>Specificity</b>	PAR6G Polyclonal Antibody detects endogenous levels of protein.
<b>Formulation</b>	Liquid in PBS containing 50% glycerol, and 0.02% sodium azide..
<b>Storage</b>	Store at -20°C. Avoid repeated freeze-thaw cycles.
<b>Protein Name</b>	Partitioning defective 6 homolog gamma (PAR-6 gamma) (PAR6D)
<b>Gene Name</b>	PAR6G PAR6G
<b>Cellular localization</b>	Cytoplasm. Cell membrane . Cell junction, tight junction .
<b>Purification</b>	The antibody was affinity-purified from rabbit antiserum by affinity-chromatography using epitope-specific immunogen.
<b>Clonality</b>	Polyclonal

<b>Concentration</b>	1 mg/ml
<b>Observed band</b>	41kD
<b>Human Gene ID</b>	84552
<b>Human Swiss-Prot Number</b>	Q9BYG4
<b>Alternative Names</b>	

## Background

domain:The pseudo-CRIB domain together with the PDZ domain is required for the interaction with Rho small GTPases.,function:Adapter protein involved in asymmetrical cell division and cell polarization processes. May play a role in the formation of epithelial tight junctions. The PARD6-PARD3 complex links GTP-bound Rho small GTPases to atypical protein kinase C proteins.,similarity:Belongs to the PAR6 family.,similarity:Contains 1 OPR domain.,similarity:Contains 1 PDZ (DHR) domain.,similarity:Contains 1 pseudo-CRIB domain.,subunit:Interacts with PARD3 (Probable). Interacts with GTP-bound forms of CDC42, ARHQ/TC10 and RAC1. Interacts with the N-terminal part of PRKCI and PRKCZ.,tissue specificity:Widely expressed, with a higher expression in fetal and adult kidney.,



**Western blot analysis of lysates from HCT116 cells, primary antibody was diluted at 1:1000, 4° over night**