

## GPM6B rabbit pAb

**Cat#: orb772795 (Manual)**

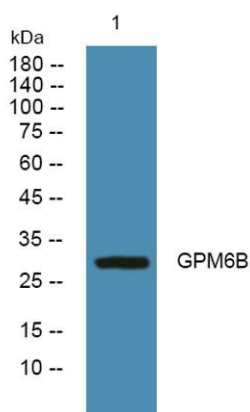
For research use only. Not intended for diagnostic use.

<b>Product Name</b>	GPM6B rabbit pAb
<b>Host species</b>	Rabbit
<b>Applications</b>	WB;ELISA
<b>Species Cross-Reactivity</b>	Human;Rat;Mouse
<b>Recommended dilutions</b>	WB 1:500-2000 ELISA 1:5000-20000
<b>Immunogen</b>	Synthesized peptide derived from human protein . at AA range: 450-530
<b>Specificity</b>	GPM6B Polyclonal Antibody detects endogenous levels of protein.
<b>Formulation</b>	Liquid in PBS containing 50% glycerol, and 0.02% sodium azide..
<b>Storage</b>	Store at -20°C. Avoid repeated freeze-thaw cycles.
<b>Protein Name</b>	Neuronal membrane glycoprotein M6-b (M6b)
<b>Gene Name</b>	GPM6B M6B
<b>Cellular localization</b>	Cell membrane ; Multi-pass membrane protein . Colocalizes with SERT at the plasma membrane. .
<b>Purification</b>	The antibody was affinity-purified from rabbit antiserum by affinity-chromatography using epitope-specific immunogen.
<b>Clonality</b>	Polyclonal

<b>Concentration</b>	1 mg/ml
<b>Observed band</b>	29kD
<b>Human Gene ID</b>	2824
<b>Human Swiss-Prot Number</b>	Q13491
<b>Alternative Names</b>	

### Background

glycoprotein M6B(GPM6B) Homo sapiens This gene encodes a membrane glycoprotein that belongs to the proteolipid protein family. Proteolipid protein family members are expressed in most brain regions and are thought to be involved in cellular housekeeping functions such as membrane trafficking and cell-to-cell communication. This protein may also be involved in osteoblast differentiation. Alternate splicing results in multiple transcript variants. Pseudogenes of this gene are located on chromosomes Y and 22. [provided by RefSeq, Jan 2016],



**Western blot analysis of lysates from PC12 cells, primary antibody was diluted at 1:1000, 4° over night**