

NBAS rabbit pAb**Cat#: orb772778 (Manual)**

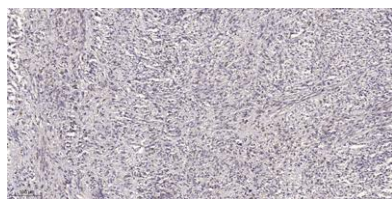
For research use only. Not intended for diagnostic use.

Product Name	NBAS rabbit pAb
Host species	Rabbit
Applications	IHC;IF
Species Cross-Reactivity	Human;Rat;Mouse;
Recommended dilutions	IHC-p 1:50-300
Immunogen	Synthesized peptide derived from human protein . at AA range: 1880-1960
Specificity	NBAS Polyclonal Antibody detects endogenous levels of protein.
Formulation	Liquid in PBS containing 50% glycerol, and 0.02% sodium azide..
Storage	Store at -20°C. Avoid repeated freeze-thaw cycles.
Protein Name	Neuroblastoma-amplified sequence (Neuroblastoma-amplified gene protein)
Gene Name	NBAS NAG
Cellular localization	Cytoplasm . Endoplasmic reticulum . Endoplasmic reticulum membrane; Peripheral membrane protein .
Purification	The antibody was affinity-purified from rabbit antiserum by affinity-chromatography using epitope-specific immunogen.
Clonality	Polyclonal

Concentration	1 mg/ml
Observed band	260kD
Human Gene ID	51594
Human Swiss-Prot Number	A2RRP1
Alternative Names	

Background

This gene encodes a protein with two leucine zipper domains, a ribosomal protein S14 signature domain and a Sec39 like domain. The protein is thought to be involved in Golgi-to-ER transport. Mutations in this gene are associated with short stature, optic nerve atrophy, and Pelger-Huet anomaly. [provided by RefSeq, Oct 2012],



Immunohistochemical analysis of paraffin-embedded human small intestinal carcinoma tissue. 1,primary Antibody was diluted at 1:200(4° overnight). 2, Sodium citrate pH 6.0 was used for antigen retrieval(>98°C,20min). 3,Secondary antibody was diluted at 1:2