

NGRN rabbit pAb**Cat#: orb772769 (Manual)**

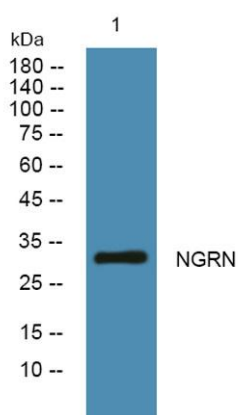
For research use only. Not intended for diagnostic use.

Product Name	NGRN rabbit pAb
Host species	Rabbit
Applications	WB;ELISA
Species Cross-Reactivity	Human;Rat;Mouse;
Recommended dilutions	WB 1:500-2000 ELISA 1:5000-20000
Immunogen	Synthesized peptide derived from human protein . at AA range: 110-190
Specificity	NGRN Polyclonal Antibody detects endogenous levels of protein.
Formulation	Liquid in PBS containing 50% glycerol, and 0.02% sodium azide..
Storage	Store at -20°C. Avoid repeated freeze-thaw cycles.
Protein Name	Neugrin (Mesenchymal stem cell protein DSC92) (Neurite outgrowth-associated protein) (Spinal cord-derived protein FI58G)
Gene Name	NGRN FI58G HT020
Cellular localization	Nucleus . Secreted . Mitochondrion membrane .
Purification	The antibody was affinity-purified from rabbit antiserum by affinity-chromatography using epitope-specific immunogen.
Clonality	Polyclonal

Concentration	1 mg/ml
Observed band	32kD
Human Gene ID	51335
Human Swiss-Prot Number	Q9NPE2
Alternative Names	

Background

function:May be involved in neuronal differentiation.,induction:Highly up-regulated in neuroblastostoma cells by RA treatment inducing neurite outgrowth.,similarity:Belongs to the neugrin family.,tissue specificity:Expressed at high levels in heart, brain and skeletal muscle. In brain, mainly expressed in neurons rather than glial cells.,



Western blot analysis of lysates from K562 cells, primary antibody was diluted at 1:1000, 4° over night