

MYEOV rabbit pAb**Cat#: orb772716 (Manual)**

For research use only. Not intended for diagnostic use.

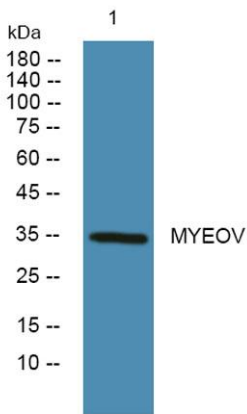
Product Name	MYEOV rabbit pAb
Host species	Rabbit
Applications	WB;ELISA
Species Cross-Reactivity	Human;Rat;Mouse;
Recommended dilutions	WB 1:500-2000 ELISA 1:5000-20000
Immunogen	Synthesized peptide derived from human protein . at AA range: 80-160
Specificity	MYEOV Polyclonal Antibody detects endogenous levels of protein.
Formulation	Liquid in PBS containing 50% glycerol, and 0.02% sodium azide..
Storage	Store at -20°C. Avoid repeated freeze-thaw cycles.
Protein Name	Myeloma-overexpressed gene protein (Oncogene in multiple myeloma)
Gene Name	MYEOV OCIM
Cellular localization	
Purification	The antibody was affinity-purified from rabbit antiserum by affinity-chromatography using epitope-specific immunogen.
Clonality	Polyclonal

Concentration	1 mg/ml
Observed band	34kD
Human Gene ID	26579
Human Swiss-Prot Number	Q96EZ4

Alternative Names

Background

developmental stage:Overexpressed in tumor cells lines with a t(11;14)(q13;q32) translocation.,



Western blot analysis of lysates from SW480 cells, primary antibody was diluted at 1:1000, 4°over night