

**MLF2 rabbit pAb****Cat#: orb772714 (Manual)**

For research use only. Not intended for diagnostic use.

<b>Product Name</b>	MLF2 rabbit pAb
<b>Host species</b>	Rabbit
<b>Applications</b>	WB;ELISA
<b>Species Cross-Reactivity</b>	Human;Mouse
<b>Recommended dilutions</b>	WB 1:500-2000 ELISA 1:5000-20000
<b>Immunogen</b>	Synthesized peptide derived from human protein . at AA range: 120-200
<b>Specificity</b>	MLF2 Polyclonal Antibody detects endogenous levels of protein.
<b>Formulation</b>	Liquid in PBS containing 50% glycerol, and 0.02% sodium azide..
<b>Storage</b>	Store at -20°C. Avoid repeated freeze-thaw cycles.
<b>Protein Name</b>	Myeloid leukemia factor 2 (Myelodysplasia-myeloid leukemia factor 2)
<b>Gene Name</b>	MLF2
<b>Cellular localization</b>	Cytoplasm . Nucleus .
<b>Purification</b>	The antibody was affinity-purified from rabbit antiserum by affinity-chromatography using epitope-specific immunogen.
<b>Clonality</b>	Polyclonal

**Concentration** 1 mg/ml

**Observed band** 27kD

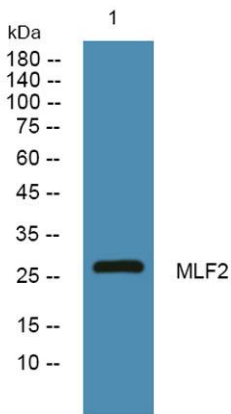
**Human Gene ID** 8079

**Human Swiss-Prot Number** Q15773

**Alternative Names**

### Background

similarity:Belongs to the MLF family.,tissue specificity:Ubiquitously expressed.,



Western blot analysis of lysates from U2OS cells, primary antibody was diluted at 1:1000, 4° over night