

MOG rabbit pAb

Cat#: orb772713 (Manual)

For research use only. Not intended for diagnostic use.

Product Name	MOG rabbit pAb
Host species	Rabbit
Applications	WB;ELISA
Species Cross-Reactivity	Human;Mouse;Rat
Recommended dilutions	WB 1:500-2000 ELISA 1:5000-20000
Immunogen	Synthesized peptide derived from human protein . at AA range: 30-110
Specificity	MOG Polyclonal Antibody detects endogenous levels of protein.
Formulation	Liquid in PBS containing 50% glycerol, and 0.02% sodium azide..
Storage	Store at -20°C. Avoid repeated freeze-thaw cycles.
Protein Name	Myelin-oligodendrocyte glycoprotein
Gene Name	MOG
Cellular localization	[Isoform 1]: Cell membrane ; Multi-pass membrane protein .; [Isoform 5]: Cell membrane ; Multi-pass membrane protein .; [Isoform 2]: Cell membrane ; Single-pass type I membrane protein .; [Isoform 3]: Cell membrane ; Single-pass type I membrane protein .; [Isoform 4]: Cell membrane ; Single-pass type I membrane protein .; [Isoform 6]: Cell membrane ; Single-pass type I membrane protein .; [Isoform 7]: Cell membrane ; Single-pass type I membrane protein .; [Isoform 8]: Cell membrane ; Single-pass type I membrane protein .; [Isoform 9]: Cell membrane ; Single-pass type I membrane protein .

Purification

The antibody was affinity-purified from rabbit antiserum by affinity-chromatography using epitope-specific immunogen.

Clonality

Polyclonal

Concentration

1 mg/ml

Observed band

27kD

Human Gene ID

4340

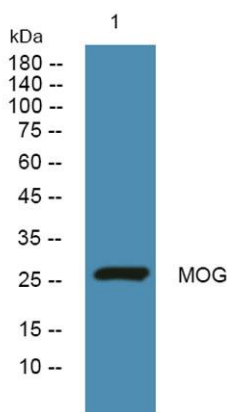
Human Swiss-Prot Number

Q16653

Alternative Names

Background

The product of this gene is a membrane protein expressed on the oligodendrocyte cell surface and the outermost surface of myelin sheaths. Due to this localization, it is a primary target antigen involved in immune-mediated demyelination. This protein may be involved in completion and maintenance of the myelin sheath and in cell-cell communication. Alternatively spliced transcript variants encoding different isoforms have been identified. [provided by RefSeq, Jul 2008],



Western blot analysis of lysates from HCT116 cells, primary antibody was diluted at 1:1000, 4°C over night