

**MPP8 rabbit pAb****Cat#: orb772697 (Manual)**

For research use only. Not intended for diagnostic use.

<b>Product Name</b>	MPP8 rabbit pAb
<b>Host species</b>	Rabbit
<b>Applications</b>	WB;ELISA
<b>Species Cross-Reactivity</b>	Human;Rat;Mouse
<b>Recommended dilutions</b>	WB 1:500-2000 ELISA 1:5000-20000
<b>Immunogen</b>	Synthesized peptide derived from human protein . at AA range: 290-370
<b>Specificity</b>	MPP8 Polyclonal Antibody detects endogenous levels of protein.
<b>Formulation</b>	Liquid in PBS containing 50% glycerol, and 0.02% sodium azide..
<b>Storage</b>	Store at -20°C. Avoid repeated freeze-thaw cycles.
<b>Protein Name</b>	M-phase phosphoprotein 8 (Two hybrid-associated protein 3 with RanBPM) (Twa3)
<b>Gene Name</b>	MPHOSPH8 MPP8
<b>Cellular localization</b>	Nucleus . Chromosome . Detected on heterochromatin (PubMed:20871592, PubMed:26022416). Dissociates from chromatin during interphase and early mitosis (PubMed:23416073). Detected on nucleosomes (PubMed:20871592)..
<b>Purification</b>	The antibody was affinity-purified from rabbit antiserum by affinity-chromatography using epitope-specific immunogen.

**Clonality** Polyclonal

**Concentration** 1 mg/ml

**Observed band** 94kD

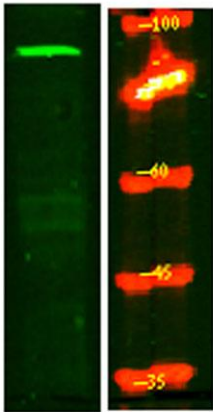
**Human Gene ID** 54737

**Human Swiss-Prot Number** Q99549

**Alternative Names**

## Background

PTM:Phosphorylated in M (mitotic) phase.,similarity:Contains 1 chromo domain.,similarity:Contains 4 ANK repeats.,



Western Blot analysis of HeLa lysis, using primary antibody at 1:1000 dilution. Secondary antibody(catalog#:RS23920) was diluted at 1:10000