

MED10 rabbit pAb**Cat#: orb772660 (Manual)**

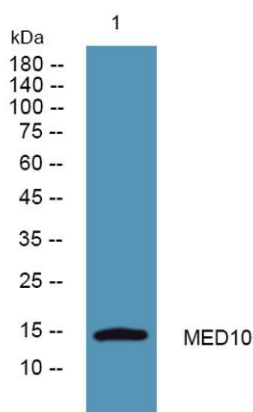
For research use only. Not intended for diagnostic use.

Product Name	MED10 rabbit pAb
Host species	Rabbit
Applications	WB;ELISA
Species Cross-Reactivity	Human;Mouse
Recommended dilutions	WB 1:500-2000 ELISA 1:5000-20000
Immunogen	Synthesized peptide derived from human protein . at AA range: 40-120
Specificity	MED10 Polyclonal Antibody detects endogenous levels of protein.
Formulation	Liquid in PBS containing 50% glycerol, and 0.02% sodium azide..
Storage	Store at -20°C. Avoid repeated freeze-thaw cycles.
Protein Name	Mediator of RNA polymerase II transcription subunit 10 (Mediator complex subunit 10) (Transformation-related gene 17 protein) (TRG-17) (Transformation-related gene 20 protein) (TRG-20)
Gene Name	MED10 L6 TRG17 TRG20
Cellular localization	Nucleus .
Purification	The antibody was affinity-purified from rabbit antiserum by affinity-chromatography using epitope-specific immunogen.
Clonality	Polyclonal

Concentration	1 mg/ml
Observed band	14kD
Human Gene ID	84246
Human Swiss-Prot Number	Q9BTT4
Alternative Names	

Background

MED10 is a component of the Mediator complex, which is a coactivator for DNA-binding factors that activate transcription via RNA polymerase II (Sato et al., 2003 [PubMed 12584197]).[supplied by OMIM, Oct 2008],



Western blot analysis of lysates from U2OS cells, primary antibody was diluted at 1:1000, 4° over night