

LRP2 rabbit pAb

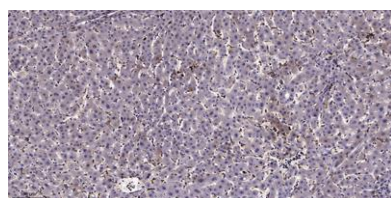
Cat#: orb772653 (Manual)

For research use only. Not intended for diagnostic use.

| | |
|---------------------------------|---|
| Product Name | LRP2 rabbit pAb |
| Host species | Rabbit |
| Applications | IHC;IF |
| Species Cross-Reactivity | Human;Rat;Mouse |
| Recommended dilutions | IHC-p 1:50-300 |
| Immunogen | Synthesized peptide derived from human protein . at AA range: 2890-2970 |
| Specificity | LRP2 Polyclonal Antibody detects endogenous levels of protein. |
| Formulation | Liquid in PBS containing 50% glycerol, and 0.02% sodium azide.. |
| Storage | Store at -20°C. Avoid repeated freeze-thaw cycles. |
| Protein Name | Low-density lipoprotein receptor-related protein 2 (LRP-2) (Glycoprotein 330) (gp330) (Megalin) |
| Gene Name | LRP2 |
| Cellular localization | Apical cell membrane ; Single-pass type I membrane protein . Endosome lumen . Membrane, coated pit . Cell projection, dendrite . Cell projection, axon . Localizes to brush border membranes in the kidney. In the endolymphatic sac of the inner ear, located in the lumen of endosomes as a soluble form. . |

| | |
|--------------------------------|---|
| Purification | The antibody was affinity-purified from rabbit antiserum by affinity-chromatography using epitope-specific immunogen. |
| Clonality | Polyclonal |
| Concentration | 1 mg/ml |
| Observed band | 512kD |
| Human Gene ID | 4036 |
| Human Swiss-Prot Number | P98164 |
| Alternative Names | |

| | |
|-------------------|--|
| Background | <p>The protein encoded by this gene, low density lipoprotein-related protein 2 (LRP2) or megalin, is a multi-ligand endocytic receptor that is expressed in many different tissues but primarily in absorptive epithelial tissues such as the kidney. This glycoprotein has a large amino-terminal extracellular domain, a single transmembrane domain, and a short carboxy-terminal cytoplasmic tail. The extracellular ligand-binding-domains bind diverse macromolecules including albumin, apolipoproteins B and E, and lipoprotein lipase. The LRP2 protein is critical for the reuptake of numerous ligands, including lipoproteins, sterols, vitamin-binding proteins, and hormones. This protein also has a role in cell-signaling; extracellular ligands include parathyroid hormones and the morphogen sonic hedgehog while cytosolic ligands include MAP kinase scaffold proteins and JNK interacting proteins. Recycling of th</p> |
|-------------------|--|



Immunohistochemical analysis of paraffin-embedded human liver cancer. 1, Antibody was diluted at 1:200(4° overnight). 2, Tris-EDTA,pH9.0 was used for antigen retrieval. 3,Secondary antibody was diluted at 1:200(room temperature, 45min).