

LRBA rabbit pAb**Cat#: orb772643 (Manual)**

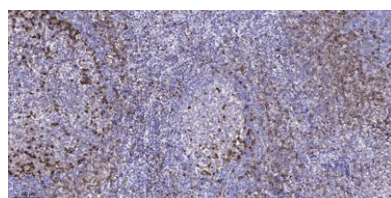
For research use only. Not intended for diagnostic use.

| | |
|---------------------------------|--|
| Product Name | LRBA rabbit pAb |
| Host species | Rabbit |
| Applications | IHC;IF |
| Species Cross-Reactivity | Human;Mouse |
| Recommended dilutions | IHC-p 1:50-300 |
| Immunogen | Synthesized peptide derived from human protein . at AA range: 1970-2050 |
| Specificity | LRBA Polyclonal Antibody detects endogenous levels of protein. |
| Formulation | Liquid in PBS containing 50% glycerol, and 0.02% sodium azide.. |
| Storage | Store at -20°C. Avoid repeated freeze-thaw cycles. |
| Protein Name | Lipopolysaccharide-responsive and beige-like anchor protein (Beige-like protein) (CDC4-like protein) |
| Gene Name | LRBA BGL CDC4L LBA |
| Cellular localization | Cell membrane ; Single-pass membrane protein . Endoplasmic reticulum membrane ; Single-pass membrane protein . Golgi apparatus, trans-Golgi network membrane ; Single-pass membrane protein . Lysosome membrane ; Single-pass membrane protein . |
| Purification | The antibody was affinity-purified from rabbit antiserum by affinity-chromatography using epitope-specific immunogen. |

| | |
|--------------------------------|------------|
| Clonality | Polyclonal |
| Concentration | 1 mg/ml |
| Observed band | 314kD |
| Human Gene ID | 987 |
| Human Swiss-Prot Number | P50851 |
| Alternative Names | |

Background

The protein encoded by this gene is a member of the WDL-BEACH-WD (WBW) gene family. Its expression is induced in B cells and macrophages by bacterial lipopolysaccharides (LPS). The encoded protein associates with protein kinase A and may be involved in leading intracellular vesicles to activated receptor complexes, which aids in the secretion and/or membrane deposition of immune effector molecules. Defects in this gene are associated with the disorder common variable immunodeficiency-8 with autoimmunity. Two transcript variants encoding different isoforms have been found for this gene. [provided by RefSeq, Dec 2012],



Immunohistochemical analysis of paraffin-embedded human tonsil. 1, Antibody was diluted at 1:200(4° overnight). 2, Tris-EDTA,pH9.0 was used for antigen retrieval. 3,Secondary antibody was diluted at 1:200(room temperature, 45min).