

DBX1 rabbit pAb**Cat#: orb772591 (Manual)**

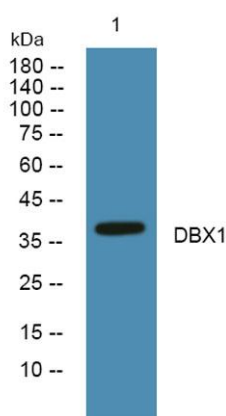
For research use only. Not intended for diagnostic use.

Product Name	DBX1 rabbit pAb
Host species	Rabbit
Applications	WB;ELISA
Species Cross-Reactivity	Human;Rat;Mouse
Recommended dilutions	WB 1:500-2000 ELISA 1:5000-20000
Immunogen	Synthesized peptide derived from part region of human protein
Specificity	DBX1 Polyclonal Antibody detects endogenous levels of protein.
Formulation	Liquid in PBS containing 50% glycerol, and 0.02% sodium azide..
Storage	Store at -20°C. Avoid repeated freeze-thaw cycles.
Protein Name	Homeobox protein DBX1 (Developing brain homeobox protein 1)
Gene Name	DBX1
Cellular localization	Nucleus .
Purification	The antibody was affinity-purified from rabbit antiserum by affinity-chromatography using epitope-specific immunogen.
Clonality	Polyclonal

Concentration	1 mg/ml
Observed band	37kD
Human Gene ID	120237
Human Swiss-Prot Number	A6NMT0
Alternative Names	

Background

DBX1 (Developing Brain Homeobox 1) is a Protein Coding gene. Diseases associated with DBX1 include Central Hypoventilation Syndrome, Congenital. Could have a role in patterning the central nervous system during embryogenesis. Has a key role in regulating the distinct phenotypic features that distinguish two major classes of ventral interneurons, V0 and V1 neurons. Regulates the transcription factor profile, neurotransmitter phenotype, intraspinal migratory path and axonal trajectory of V0 neurons, features that differentiate them from an adjacent set of V1 neurons (By similarity).



Western blot analysis of lysates from K562 cells, primary antibody was diluted at 1:1000, 4° over night