

MSS4 rabbit pAb**Cat#: orb772572 (Manual)**

For research use only. Not intended for diagnostic use.

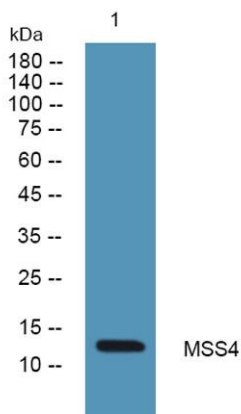
Product Name	MSS4 rabbit pAb
Host species	Rabbit
Applications	WB;ELISA
Species Cross-Reactivity	Human;Mouse;Rat
Recommended dilutions	WB 1:500-2000 ELISA 1:5000-20000
Immunogen	Synthesized peptide derived from part region of human protein
Specificity	MSS4 Polyclonal Antibody detects endogenous levels of protein.
Formulation	Liquid in PBS containing 50% glycerol, and 0.02% sodium azide..
Storage	Store at -20°C. Avoid repeated freeze-thaw cycles.
Protein Name	Guanine nucleotide exchange factor MSS4 (Rab-interacting factor)
Gene Name	RABIF MSS4 RASGRF3
Cellular localization	intracellular,cytosol,membrane,
Purification	The antibody was affinity-purified from rabbit antiserum by affinity-chromatography using epitope-specific immunogen.
Clonality	Polyclonal

Concentration	1 mg/ml
Observed band	13kD
Human Gene ID	5877
Human Swiss-Prot Number	P47224

Alternative Names

Background

This gene encodes a member of the SCE4/YPT1/RAB family of small GTP-binding proteins that are involved in the regulation of intracellular vesicular transport. This protein stimulates GTP-GDP exchange in SEC4, and to a lesser extent in YPT1 and RAB3A, and may play a general role in vesicular transport. [provided by RefSeq, Oct 2011],



Western blot analysis of lysates from PC12 cells, primary antibody was diluted at 1:1000, 4° over night