

**SAR1A rabbit pAb****Cat#: orb772570 (Manual)**

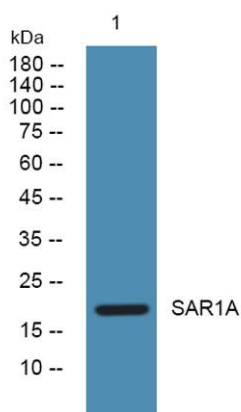
For research use only. Not intended for diagnostic use.

|                                 |   |
|---------------------------------|---|
| <b>Product Name</b>             | SAR1A rabbit pAb  |
| <b>Host species</b>             | Rabbit  |
| <b>Applications</b>             | WB;ELISA  |
| <b>Species Cross-Reactivity</b> | Human;Mouse   |
| <b>Recommended dilutions</b>    | WB 1:500-2000 ELISA 1:5000-20000  |
| <b>Immunogen</b>                | Synthesized peptide derived from part region of human protein   |
| <b>Specificity</b>              | SAR1A Polyclonal Antibody detects endogenous levels of protein.   |
| <b>Formulation</b>              | Liquid in PBS containing 50% glycerol, and 0.02% sodium azide..   |
| <b>Storage</b>                  | Store at -20°C. Avoid repeated freeze-thaw cycles.  |
| <b>Protein Name</b>             | GTP-binding protein SAR1a (COPII-associated small GTPase)   |
| <b>Gene Name</b>                | SAR1A SAR1 SARA SARA1   |
| <b>Cellular localization</b>    | Endoplasmic reticulum . Golgi apparatus .   |
| <b>Purification</b>             | The antibody was affinity-purified from rabbit antiserum by affinity-chromatography using epitope-specific immunogen. |
| <b>Clonality</b>                | Polyclonal  |

|                                |         |
|--------------------------------|---------|
| <b>Concentration</b>           | 1 mg/ml |
| <b>Observed band</b>           | 21kD    |
| <b>Human Gene ID</b>           | 56681   |
| <b>Human Swiss-Prot Number</b> | Q9NR31  |
| <b>Alternative Names</b>       |         |

### Background

function:Involved in transport from the endoplasmic reticulum to the Golgi apparatus (By similarity). Required to maintain SEC16A localization at discrete locations on the ER membrane perhaps by preventing its dissociation. SAR1A-GTP-dependent assembly of SEC16A on the ER membrane forms an organized scaffold defining endoplasmic reticulum exit sites (ERES).,similarity:Belongs to the small GTPase superfamily.,similarity:Belongs to the small GTPase superfamily. SAR1 family.,



**Western blot analysis of lysates from K562 cells, primary antibody was diluted at 1:1000, 4° over night**