

HPGDS rabbit pAb**Cat#: orb772551 (Manual)**

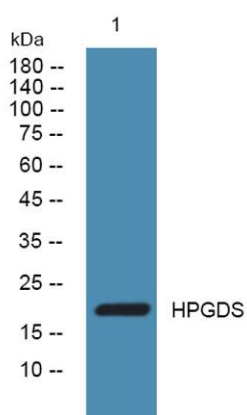
For research use only. Not intended for diagnostic use.

Product Name	HPGDS rabbit pAb
Host species	Rabbit
Applications	WB;ELISA
Species Cross-Reactivity	Human;Rat;Mouse;
Recommended dilutions	WB 1:500-2000 ELISA 1:5000-20000
Immunogen	Synthesized peptide derived from part region of human protein
Specificity	HPGDS Polyclonal Antibody detects endogenous levels of protein.
Formulation	Liquid in PBS containing 50% glycerol, and 0.02% sodium azide..
Storage	Store at -20°C. Avoid repeated freeze-thaw cycles.
Protein Name	Hematopoietic prostaglandin D synthase (H-PGDS) (EC 5.3.99.2) (GST class-sigma) (Glutathione S-transferase) (EC 2.5.1.18) (Glutathione-dependent PGD synthase) (Glutathione-requiring prostaglandin D sy
Gene Name	HPGDS GSTS PGDS PTGDS2
Cellular localization	Cytoplasm .
Purification	The antibody was affinity-purified from rabbit antiserum by affinity-chromatography using epitope-specific immunogen.
Clonality	Polyclonal

Concentration	1 mg/ml
Observed band	21kD
Human Gene ID	27306
Human Swiss-Prot Number	O60760
Alternative Names	

Background

Prostaglandin-D synthase is a sigma class glutathione-S-transferase family member. The enzyme catalyzes the conversion of PGH2 to PGD2 and plays a role in the production of prostanoids in the immune system and mast cells. The presence of this enzyme can be used to identify the differentiation stage of human megakaryocytes. [provided by RefSeq, Jul 2008].



Western blot analysis of lysates from DU145 cells, primary antibody was diluted at 1:1000, 4° over night