

**RNF5 rabbit pAb****Cat#: orb772510 (Manual)**

For research use only. Not intended for diagnostic use.

<b>Product Name</b>	RNF5 rabbit pAb
<b>Host species</b>	Rabbit
<b>Applications</b>	WB;ELISA
<b>Species Cross-Reactivity</b>	Human;Mouse;Rat
<b>Recommended dilutions</b>	WB 1:500-2000 ELISA 1:5000-20000
<b>Immunogen</b>	Synthesized peptide derived from part region of human protein
<b>Specificity</b>	RNF5 Polyclonal Antibody detects endogenous levels of protein.
<b>Formulation</b>	Liquid in PBS containing 50% glycerol, and 0.02% sodium azide..
<b>Storage</b>	Store at -20°C. Avoid repeated freeze-thaw cycles.
<b>Protein Name</b>	E3 ubiquitin-protein ligase RNF5 (EC 6.3.2.-) (Protein G16) (RING finger protein 5) (Rml homolog) (HsRml)
<b>Gene Name</b>	RNF5 G16 NG2 RMA1
<b>Cellular localization</b>	Cell membrane ; Multi-pass membrane protein . Mitochondrion membrane ; Multi-pass membrane protein . Endoplasmic reticulum membrane ; Multi-pass membrane protein . Predominantly located in the plasma membrane, with some localization occurring within cytoplasmic organelles. .
<b>Purification</b>	The antibody was affinity-purified from rabbit antiserum by affinity-chromatography using epitope-specific immunogen.

**Clonality** Polyclonal

**Concentration** 1 mg/ml

**Observed band** 19kD

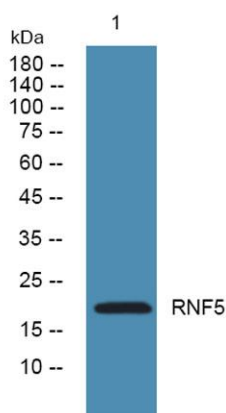
**Human Gene ID** 6048

**Human Swiss-Prot Number** Q99942

**Alternative Names**

### Background

The protein encoded by this gene contains a RING finger, which is a motif known to be involved in protein-protein interactions. This protein is a membrane-bound ubiquitin ligase. It can regulate cell motility by targeting paxillin ubiquitination and altering the distribution and localization of paxillin in cytoplasm and cell focal adhesions. [provided by RefSeq, Jul 2008],



**Western blot analysis of lysates from A431 cells, primary antibody was diluted at 1:1000, 4° over night**