

**RPB7 rabbit pAb****Cat#: orb772481 (Manual)**

For research use only. Not intended for diagnostic use.

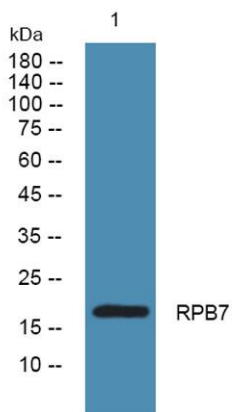
<b>Product Name</b>	RPB7 rabbit pAb
<b>Host species</b>	Rabbit
<b>Applications</b>	WB;ELISA
<b>Species Cross-Reactivity</b>	Human;Mouse;Rat
<b>Recommended dilutions</b>	WB 1:500-2000 ELISA 1:5000-20000
<b>Immunogen</b>	Synthesized peptide derived from part region of human protein
<b>Specificity</b>	RPB7 Polyclonal Antibody detects endogenous levels of protein.
<b>Formulation</b>	Liquid in PBS containing 50% glycerol, and 0.02% sodium azide..
<b>Storage</b>	Store at -20°C. Avoid repeated freeze-thaw cycles.
<b>Protein Name</b>	DNA-directed RNA polymerase II subunit RPB7 (RNA polymerase II subunit B7) (DNA-directed RNA polymerase II subunit G) (RNA polymerase II 19 kDa subunit) (RPB19)
<b>Gene Name</b>	POLR2G RPB7
<b>Cellular localization</b>	Nucleus .
<b>Purification</b>	The antibody was affinity-purified from rabbit antiserum by affinity-chromatography using epitope-specific immunogen.
<b>Clonality</b>	Polyclonal

<b>Concentration</b>	1 mg/ml
<b>Observed band</b>	18kD
<b>Human Gene ID</b>	5436
<b>Human Swiss-Prot Number</b>	P62487

#### Alternative Names

#### Background

This gene encodes the seventh largest subunit of RNA polymerase II, the polymerase responsible for synthesizing messenger RNA in eukaryotes. The protein functions in transcription initiation, and is also thought to help stabilize transcribing polymerase molecules during elongation. [provided by RefSeq, Jan 2009],



Western blot analysis of lysates from KB cells, primary antibody was diluted at 1:1000, 4° over night