

RPA43 rabbit pAb**Cat#: orb772478 (Manual)**

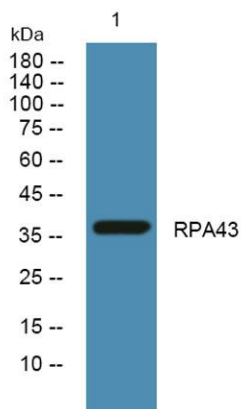
For research use only. Not intended for diagnostic use.

Product Name	RPA43 rabbit pAb
Host species	Rabbit
Applications	WB;ELISA
Species Cross-Reactivity	Human;Rat;Mouse;
Recommended dilutions	WB 1:500-2000 ELISA 1:5000-20000
Immunogen	Synthesized peptide derived from part region of human protein
Specificity	RPA43 Polyclonal Antibody detects endogenous levels of protein.
Formulation	Liquid in PBS containing 50% glycerol, and 0.02% sodium azide..
Storage	Store at -20°C. Avoid repeated freeze-thaw cycles.
Protein Name	DNA-directed RNA polymerase I subunit RPA43 (Twist neighbor protein)
Gene Name	TWISTNB
Cellular localization	Nucleus, nucleolus .
Purification	The antibody was affinity-purified from rabbit antiserum by affinity-chromatography using epitope-specific immunogen.
Clonality	Polyclonal

Concentration	1 mg/ml
Observed band	37kD
Human Gene ID	221830
Human Swiss-Prot Number	Q3B726
Alternative Names	

Background

function:DNA-dependent RNA polymerase catalyzes the transcription of DNA into RNA using the four ribonucleoside triphosphates as substrates. Component of RNA polymerase I which synthesizes ribosomal RNA precursors. Through its association with RRN3/TIF-IA may be involved in recruitment of Pol I to rDNA promoters.,similarity:Belongs to the eukaryotic RPA43 RNA polymerase subunit family.,subunit:Component of the RNA polymerase I (Pol I) complex consisting of at least 13 subunits (By similarity). Interacts with RRN3/TIF-IA.,tissue specificity:Widely expressed. Expressed in all fetal and adult tissues tested, with highest expression in fetal lung, liver, and kidney, and low expression in all adult tissues.,



Western blot analysis of lysates from U2OS cells, primary antibody was diluted at 1:1000, 4° over night