

PSF2 rabbit pAb**Cat#: orb772470 (Manual)**

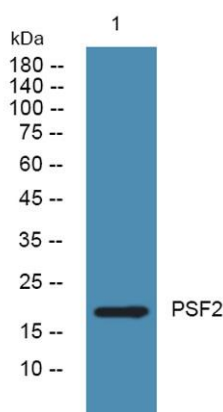
For research use only. Not intended for diagnostic use.

Product Name	PSF2 rabbit pAb
Host species	Rabbit
Applications	WB;ELISA
Species Cross-Reactivity	Human;Mouse
Recommended dilutions	WB 1:500-2000 ELISA 1:5000-20000
Immunogen	Synthesized peptide derived from part region of human protein
Specificity	PSF2 Polyclonal Antibody detects endogenous levels of protein.
Formulation	Liquid in PBS containing 50% glycerol, and 0.02% sodium azide..
Storage	Store at -20°C. Avoid repeated freeze-thaw cycles.
Protein Name	DNA replication complex GINS protein PSF2 (GINS complex subunit 2)
Gene Name	GINS2 PSF2 CGI-122 DC5 HSPC037
Cellular localization	Nucleus . Chromosome . Associates with chromatin. .
Purification	The antibody was affinity-purified from rabbit antiserum by affinity-chromatography using epitope-specific immunogen.
Clonality	Polyclonal

Concentration	1 mg/ml
Observed band	20kD
Human Gene ID	51659
Human Swiss-Prot Number	Q9Y248
Alternative Names	

Background

The yeast heterotetrameric GINS complex is made up of Sld5 (GINS4; MIM 610611), Psf1 (GINS1; MIM 610608), Psf2, and Psf3 (GINS3; MIM 610610). The formation of this complex is essential for the initiation of DNA replication in yeast and *Xenopus* egg extracts (Ueno et al., 2005 [PubMed 16287864]). See GINS1 for additional information about the GINS complex.[supplied by OMIM, Mar 2008],



Western blot analysis of lysates from A431 cells, primary antibody was diluted at 1:1000, 4° over night