

CEA20 rabbit pAb**Cat#: orb772381 (Manual)**

For research use only. Not intended for diagnostic use.

Product Name	CEA20 rabbit pAb
Host species	Rabbit
Applications	WB;ELISA
Species Cross-Reactivity	Human;Rat;Mouse;
Recommended dilutions	WB 1:500-2000 ELISA 1:5000-20000
Immunogen	Synthesized peptide derived from part region of human protein
Specificity	CEA20 Polyclonal Antibody detects endogenous levels of protein.
Formulation	Liquid in PBS containing 50% glycerol, and 0.02% sodium azide..
Storage	Store at -20°C. Avoid repeated freeze-thaw cycles.
Protein Name	Carcinoembryonic antigen-related cell adhesion molecule 20
Gene Name	CEACAM20 UNQ9366/PRO34155
Cellular localization	Cell projection, microvillus membrane ; Single-pass type I membrane protein . Apical cell membrane ; Single-pass type I membrane protein . Colocalizes with PTPRH and CEACAM1 at the apical brush border of intestinal cells.
Purification	The antibody was affinity-purified from rabbit antiserum by affinity-chromatography using epitope-specific immunogen.

Clonality Polyclonal

Concentration 1 mg/ml

Observed band 64kD

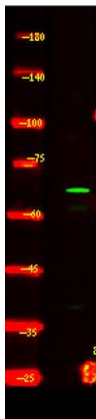
Human Gene ID 125931

Human Swiss-Prot Number Q6UY09

Alternative Names

Background

similarity:Belongs to the immunoglobulin superfamily. CEA family.,similarity:Contains 4 Ig-like C2-type (immunoglobulin-like) domains.,



Western Blot analysis of HEK293 lysis, using primary antibody at 1:1000 dilution. Secondary antibody(catalog#:RS23920) was diluted at 1:10000