

**CTAG2 rabbit pAb****Cat#: orb772365 (Manual)**

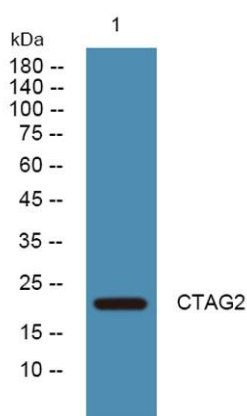
For research use only. Not intended for diagnostic use.

<b>Product Name</b>	CTAG2 rabbit pAb
<b>Host species</b>	Rabbit
<b>Applications</b>	WB;ELISA
<b>Species Cross-Reactivity</b>	Human;Rat;Mouse;
<b>Recommended dilutions</b>	WB 1:500-2000 ELISA 1:5000-20000
<b>Immunogen</b>	Synthesized peptide derived from part region of human protein
<b>Specificity</b>	CTAG2 Polyclonal Antibody detects endogenous levels of protein.
<b>Formulation</b>	Liquid in PBS containing 50% glycerol, and 0.02% sodium azide..
<b>Storage</b>	Store at -20°C. Avoid repeated freeze-thaw cycles.
<b>Protein Name</b>	Cancer/testis antigen 2 (CT2) (Autoimmunogenic cancer/testis antigen NY-ESO-2) (Cancer/testis antigen 6.2) (CT6.2) (L antigen family member 1) (LAGE-1)
<b>Gene Name</b>	CTAG2 ESO2 LAGE1
<b>Cellular localization</b>	centrosome,
<b>Purification</b>	The antibody was affinity-purified from rabbit antiserum by affinity-chromatography using epitope-specific immunogen.
<b>Clonality</b>	Polyclonal

<b>Concentration</b>	1 mg/ml
<b>Observed band</b>	23kD
<b>Human Gene ID</b>	30848
<b>Human Swiss-Prot Number</b>	O75638
<b>Alternative Names</b>	

### Background

This gene encodes an autoimmunogenic tumor antigen that belongs to the ESO/LAGE family of cancer-testis antigens. This protein is expressed in a wide array of cancers including melanoma, breast cancer, bladder cancer and prostate cancer. This protein is also expressed in normal testis tissue. An alternative open reading frame product of this gene has been described in PMID:10399963. This alternate protein, termed CAMEL, is a tumor antigen that is recognized by melanoma-specific cytotoxic T-lymphocytes. Alternate splicing results in multiple transcript variants. [provided by RefSeq, Sep 2013],



**Western blot analysis of lysates from DU145 cells, primary antibody was diluted at 1:1000, 4° over night**