

CHERP rabbit pAb**Cat#: orb772339 (Manual)**

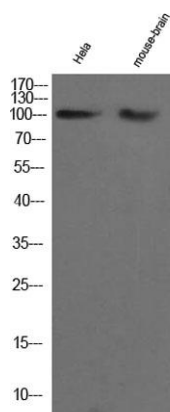
For research use only. Not intended for diagnostic use.

Product Name	CHERP rabbit pAb
Host species	Rabbit
Applications	WB;ELISA
Species Cross-Reactivity	Human;Mouse
Recommended dilutions	WB 1:500-2000 ELISA 1:5000-20000
Immunogen	Synthesized peptide derived from part region of human protein
Specificity	CHERP Polyclonal Antibody detects endogenous levels of protein.
Formulation	Liquid in PBS containing 50% glycerol, and 0.02% sodium azide..
Storage	Store at -20°C. Avoid repeated freeze-thaw cycles.
Protein Name	Calcium homeostasis endoplasmic reticulum protein (ERPROT 213-21) (SR-related CTD-associated factor 6)
Gene Name	CHERP DAN26 SCAF6
Cellular localization	Cytoplasm . Cytoplasm, perinuclear region . Endoplasmic reticulum . Distributed throughout the cytoplasm and also localizes to the perinuclear region of both human erythroleukemia (HEL) cells and Jurkat cells. Colocalizes with ITPR1. .
Purification	The antibody was affinity-purified from rabbit antiserum by affinity-chromatography using epitope-specific immunogen.

Clonality	Polyclonal
Concentration	1 mg/ml
Observed band	100kD
Human Gene ID	10523
Human Swiss-Prot Number	Q8IWX8
Alternative Names	

Background

function:Involved in calcium homeostasis, growth and proliferation.,sequence caution:Translation N-terminally shortened.,similarity:Contains 1 CID domain.,similarity:Contains 1 G-patch domain.,similarity:Contains 1 SURP motif repeat.,subcellular location:Distributed throughout the cytoplasm and also localizes to the perinuclear region of both human erythroleukemia (HEL) cells and Jurkat cells. Colocalizes with ITPR1.,tissue specificity:Expressed in brain, placenta, lung, liver, kidney, pancreas, cardiac and skeletal muscle, and in cultured HEL and Dami cells.,



Western Blot analysis of hela and mouse brain cell lysis. Primary Antibody was diluted at 1:1000. Secondary antibody(catalog#:RS23920 was diluted at 1:10000