

**BOK rabbit pAb****Cat#: orb772318 (Manual)**

For research use only. Not intended for diagnostic use.

<b>Product Name</b>	BOK rabbit pAb
<b>Host species</b>	Rabbit
<b>Applications</b>	WB;ELISA
<b>Species Cross-Reactivity</b>	Human;Mouse;Rat
<b>Recommended dilutions</b>	WB 1:500-2000 ELISA 1:5000-20000
<b>Immunogen</b>	Synthesized peptide derived from human protein . at AA range: 10-90
<b>Specificity</b>	BOK Polyclonal Antibody detects endogenous levels of protein.
<b>Formulation</b>	Liquid in PBS containing 50% glycerol, and 0.02% sodium azide..
<b>Storage</b>	Store at -20°C. Avoid repeated freeze-thaw cycles.
<b>Protein Name</b>	Bcl-2-related ovarian killer protein (hBOK) (Bcl-2-like protein 9) (Bcl2-L-9)
<b>Gene Name</b>	BOK BCL2L9
<b>Cellular localization</b>	[Isoform 1]: Mitochondrion membrane ; Single-pass membrane protein . Endoplasmic reticulum membrane ; Single-pass membrane protein . Mitochondrion inner membrane . Cytoplasm . Nucleus . Mitochondrion . Endoplasmic reticulum . Mitochondrion outer membrane . Early endosome membrane . Recycling endosome membrane . Nucleus outer membrane . Golgi apparatus, cis-Golgi network membrane . Golgi apparatus, trans-Golgi network membrane . Membrane . Nuclear and cytoplasmic compartments in the early stages of apoptosis and during apoptosis it associates with mitochondria (PubMed:19942931). In healthy cells, associates loosely with the membrane in a hit-and-run mode. The insertion and accumulation on membranes is enhanced through the activity of death signals, resulting in the

integration of the membra

#### Purification

The antibody was affinity-purified from rabbit antiserum by affinity-chromatography using epitope-specific immunogen.

#### Clonality

Polyclonal

#### Concentration

1 mg/ml

#### Observed band

23kD

#### Human Gene ID

666

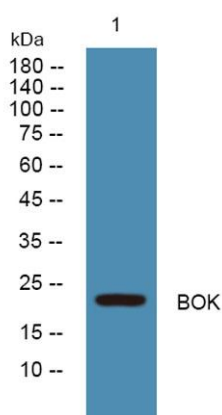
#### Human Swiss-Prot Number

Q9UMX3

#### Alternative Names

#### Background

The protein encoded by this gene belongs to the BCL2 family, members of which form homo- or heterodimers, and act as anti- or proapoptotic regulators that are involved in a wide variety of cellular processes. Studies in rat show that this protein has restricted expression in reproductive tissues, interacts strongly with some antiapoptotic BCL2 proteins, not at all with proapoptotic BCL2 proteins, and induces apoptosis in transfected cells. Thus, this protein represents a proapoptotic member of the BCL2 family. [provided by RefSeq, Sep 2011],



Western blot analysis of lysates from U2OS cells, primary antibody was diluted at 1:1000, 4° over night