

AQP10 rabbit pAb**Cat#: orb772275 (Manual)**

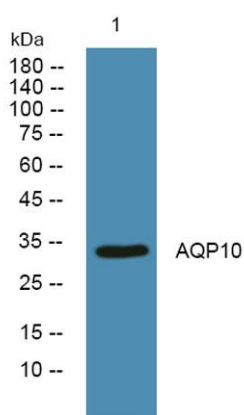
For research use only. Not intended for diagnostic use.

Product Name	AQP10 rabbit pAb
Host species	Rabbit
Applications	WB;ELISA
Species Cross-Reactivity	Human;Rat;Mouse;
Recommended dilutions	WB 1:500-2000 ELISA 1:5000-20000
Immunogen	Synthesized peptide derived from human protein . at AA range: 230-310
Specificity	AQP10 Polyclonal Antibody detects endogenous levels of protein.
Formulation	Liquid in PBS containing 50% glycerol, and 0.02% sodium azide..
Storage	Store at -20°C. Avoid repeated freeze-thaw cycles.
Protein Name	Aquaporin-10 (AQP-10) (Aquaglyceroporin-10) (Small intestine aquaporin)
Gene Name	AQP10
Cellular localization	Apical cell membrane ; Multi-pass membrane protein . Cell membrane ; Multi-pass membrane protein . Lipid droplet . Detected around lipid droplets. .
Purification	The antibody was affinity-purified from rabbit antiserum by affinity-chromatography using epitope-specific immunogen.
Clonality	Polyclonal

Concentration	1 mg/ml
Observed band	33kD
Human Gene ID	89872
Human Swiss-Prot Number	Q96PS8
Alternative Names	

Background

This gene encodes a member of the aquaglyceroporin family of integral membrane proteins. Members of this family function as water-permeable channels in the epithelia of organs that absorb and excrete water. This protein was shown to function as a water-selective channel, and could also permeate neutral solutes such as glycerol and urea. [provided by RefSeq, Jul 2008],



Western blot analysis of lysates from K562 cells, primary antibody was diluted at 1:1000, 4° over night