

AAMP rabbit pAb**Cat#: orb772264 (Manual)**

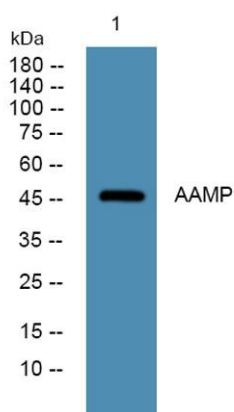
For research use only. Not intended for diagnostic use.

Product Name	AAMP rabbit pAb
Host species	Rabbit
Applications	WB;ELISA
Species Cross-Reactivity	Human;Rat;Mouse;
Recommended dilutions	WB 1:500-2000 ELISA 1:5000-20000
Immunogen	Synthesized peptide derived from human protein . at AA range: 330-410
Specificity	AAMP Polyclonal Antibody detects endogenous levels of protein.
Formulation	Liquid in PBS containing 50% glycerol, and 0.02% sodium azide..
Storage	Store at -20°C. Avoid repeated freeze-thaw cycles.
Protein Name	Angio-associated migratory cell protein
Gene Name	AAMP
Cellular localization	Cell membrane. Cytoplasm.
Purification	The antibody was affinity-purified from rabbit antiserum by affinity-chromatography using epitope-specific immunogen.
Clonality	Polyclonal

Concentration	1 mg/ml
Observed band	47kD
Human Gene ID	14
Human Swiss-Prot Number	Q13685
Alternative Names	

Background

The gene is a member of the immunoglobulin superfamily. The encoded protein is associated with angiogenesis, with potential roles in endothelial tube formation and the migration of endothelial cells. It may also regulate smooth muscle cell migration via the RhoA pathway. The encoded protein can bind to heparin and may mediate heparin-sensitive cell adhesion. [provided by RefSeq, Oct 2014],



Western blot analysis of lysates from SW480 cells, primary antibody was diluted at 1:1000, 4°over night