

AWAT2 rabbit pAb**Cat#: orb772217 (Manual)**

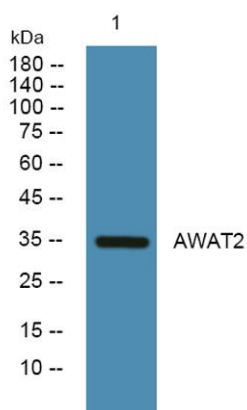
For research use only. Not intended for diagnostic use.

Product Name	AWAT2 rabbit pAb
Host species	Rabbit
Applications	WB;ELISA
Species Cross-Reactivity	Human;Mouse
Recommended dilutions	WB 1:500-2000 ELISA 1:5000-20000
Immunogen	Synthesized peptide derived from human protein . at AA range: 260-340
Specificity	AWAT2 Polyclonal Antibody detects endogenous levels of protein.
Formulation	Liquid in PBS containing 50% glycerol, and 0.02% sodium azide..
Storage	Store at -20°C. Avoid repeated freeze-thaw cycles.
Protein Name	Acyl-CoA wax alcohol acyltransferase 2 (EC 2.3.1.75) (Acyl-CoA retinol O-fatty-acyltransferase) (ARAT) (Retinol O-fatty-acyltransferase) (EC 2.3.1.76) (Diacylglycerol O-acyltransferase 2-like protein
Gene Name	AWAT2 DC4 DGAT2L4 MFAT WS
Cellular localization	Endoplasmic reticulum membrane ; Multi-pass membrane protein .
Purification	The antibody was affinity-purified from rabbit antiserum by affinity-chromatography using epitope-specific immunogen.
Clonality	Polyclonal

Concentration	1 mg/ml
Observed band	36kD
Human Gene ID	158835
Human Swiss-Prot Number	Q6E213
Alternative Names	

Background

This gene encodes an enzyme belonging to the diacylglycerol acyltransferase family. This enzyme produces wax esters by the esterification of long chain (or wax) alcohols with acyl-CoA-derived fatty acids. It functions in lipid metabolism in the skin, mostly in undifferentiated peripheral sebocytes. This enzyme may also have acyl-CoA:retinol acyltransferase activities, where it catalyzes the synthesis of diacylglycerols and retinyl esters. [provided by RefSeq, May 2010],



Western blot analysis of lysates from U2OS cells, primary antibody was diluted at 1:1000, 4° over night